

AILA 2011

CONTENTS

Part I	Information for Academic AILA.....	3
	1. Map of University Campus.....	5
	2. Floor Plans of Main and Sub Venues.....	6
	• Main Congress Building 6	
	• Sir Shaw Run Run Building (SSRR) 8	
	• School of Chinese Language and Literature (SCLL) 11	
	3. Information for Presenters of Parallel Sessions and the Audience.....	13
	• Equipment in Conference Rooms 13	
	• Reminder for Paper Presenters 13	
	• Reminder for Poster Presenters 13	
	• Intercultural Advice 13	
	4. Other Useful Information.....	14
	• Lunch 14	
	• Medical Service 14	
	• PCs and Internet Availability 14	
	• Copy Shops and Stores 14	
	• Newsstands and Public Phones 14	
	• Telephone Cards 14	
	• Banks and Cash Machines (ATMs) 14	
	• Bookstore 14	
	• Post Office 14	
	• Cafés and Bars 14	
	• Map of East Campus BFSU 15	
	• Map of Surrounding Areas 16	
	5. Activities of Publishers.....	17
	6. Sponsors and Exhibitors.....	18
Part II	Information for Cultural AILA.....	19
	1. Brief Introduction of Beijing.....	20
	2. Transportation.....	21
	• Airports 21	
	• Railway Stations 22	
	• Beijing Subway Map 23	
	• Traffic Warnings 24	
	3. Congress Party.....	25
	4. Hotels near BFSU.....	27
	5. Restaurants.....	29
	• Restaurants near BFSU 29	
	• Famous Restaurants in Beijing 33	
	6. Tourist Attractions.....	35
	• Half-Day Tour Routes 35	
	• Sightseeing Attractions 38	
	• Cultural Attractions 40	
	7. Shopping.....	43
	8. Chinese Pinyin and Useful Expressions.....	45

We have compiled some essential information to ensure your enjoyment of AILA 2011 in Beijing. In case of further questions, please contact the volunteers on campus or the working staff at Information & Services. We are always happy to help with any question or query you may have.

Additionally, we hope that you will find the time to travel around the city and enjoy the various cultural events going on in Beijing during the conference. We wish you a very fruitful and pleasant stay in Beijing!

PART I

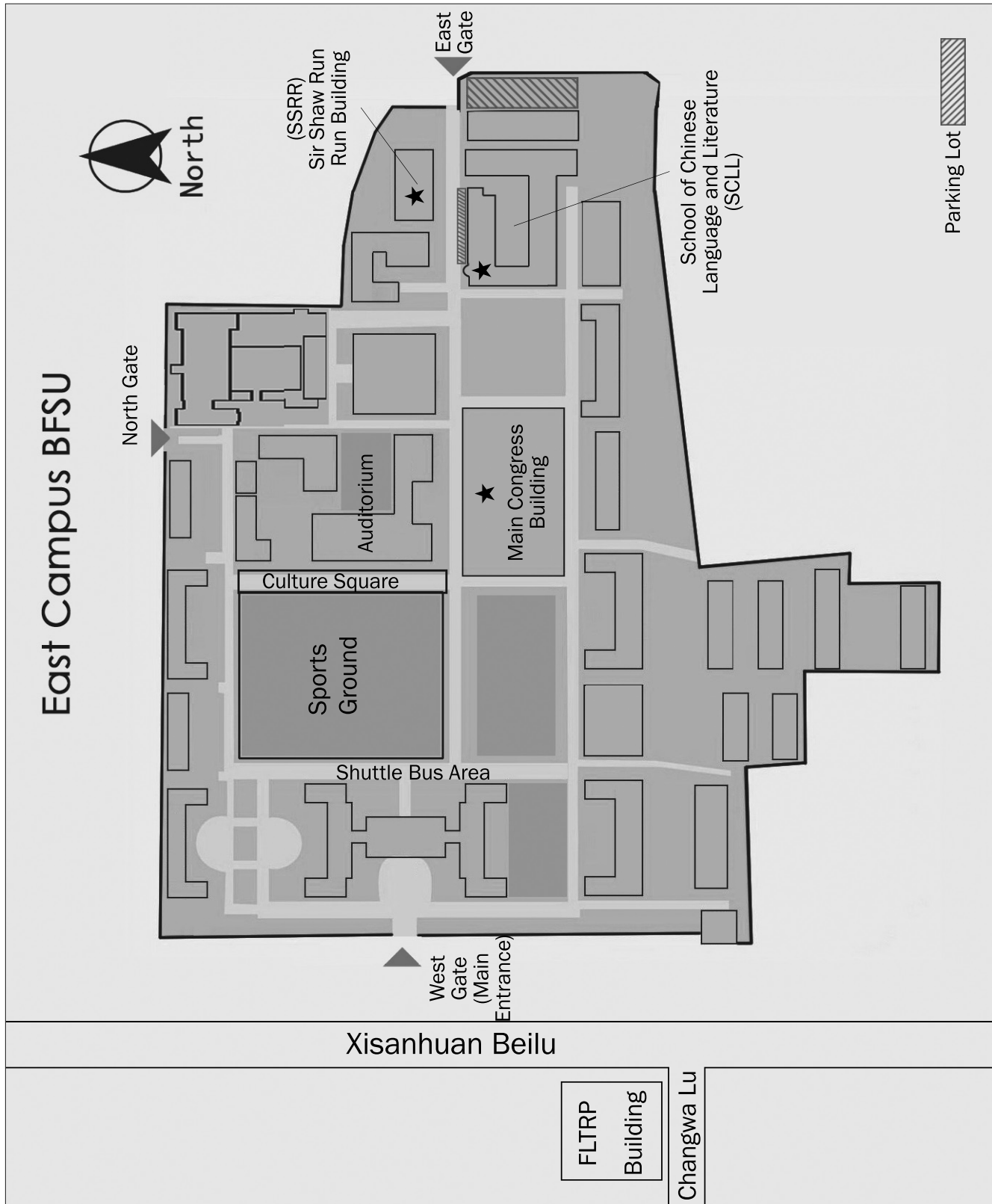
Information for Academic AILA

- Map of University Campus*
- Floor Plans of Main and Sub Venues*
- Information for Presenters
and the Audience*
- Other Useful Information*
- Activities of Publishers*
- Sponsors and Exhibitors*



1. Map of University Campus

Please note that AILA 2011 will take place in the following buildings on the East Campus of Beijing Foreign Studies University (BFSU).



2. Floor Plans of Main and Sub Venues

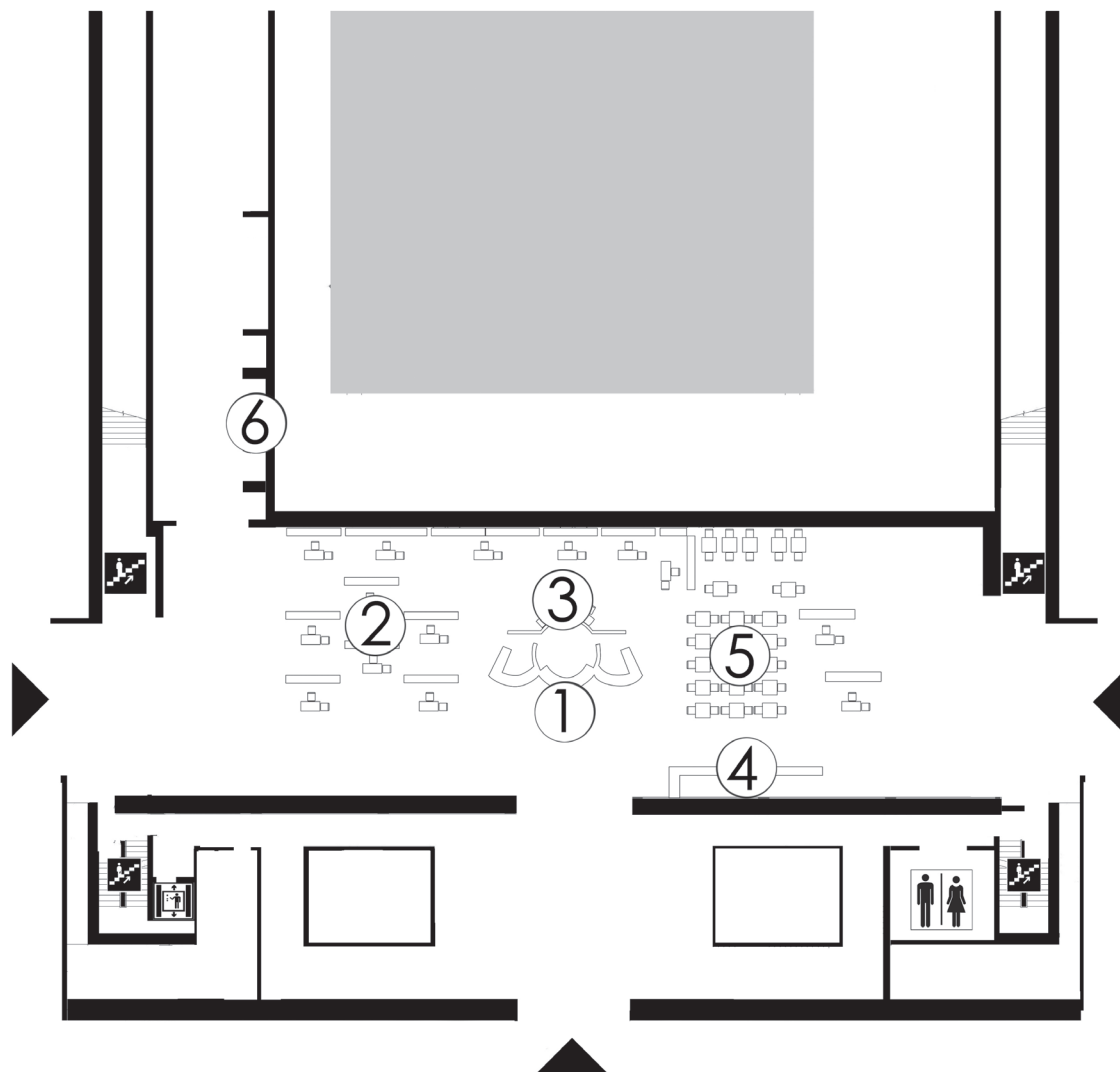
The floor plans of the main and sub venues may help you find where you are and the places you want to go.

 Toilet  Toilet for Disabled  Boiler Room  Stairs  Lift  Entrance

* For lack of lifts, please kindly use the stairs and leave the lift to those who are in most need.

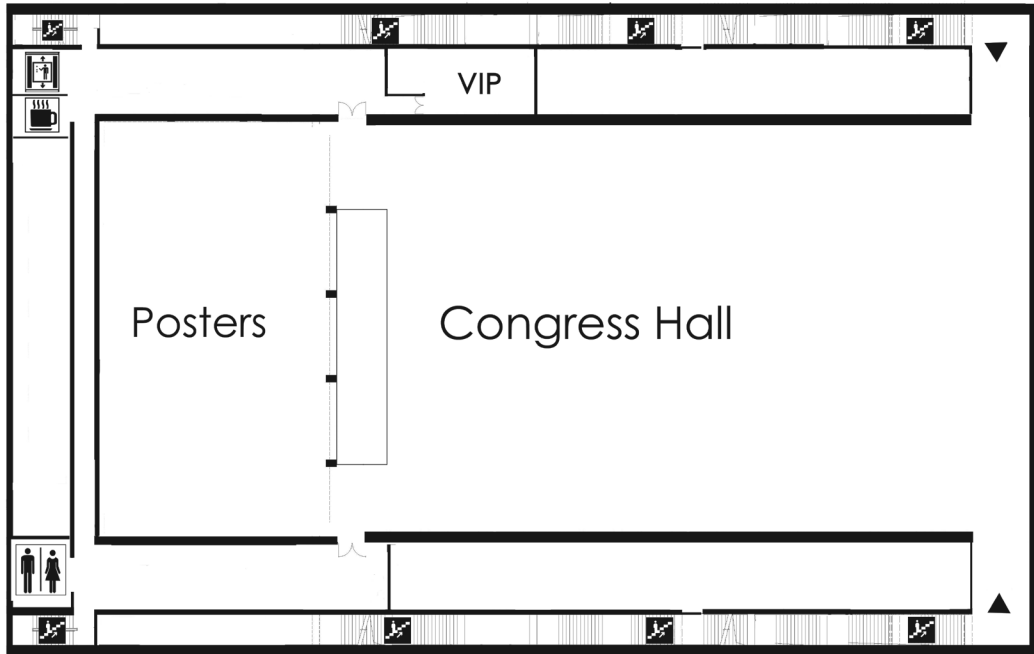
• Main Congress Building

1st Floor

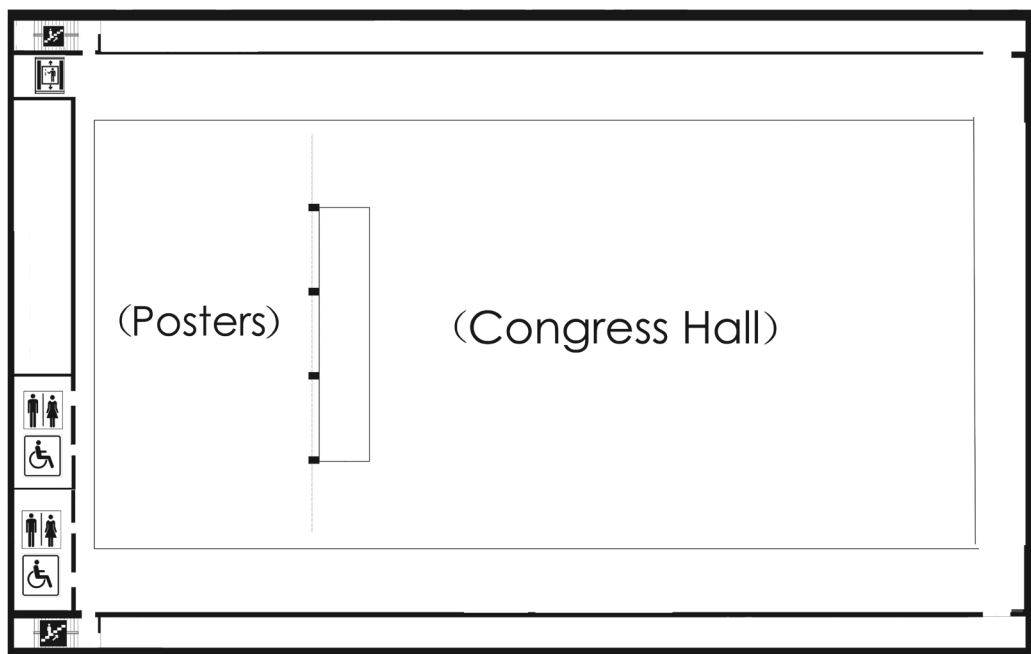


- | | |
|---------------------------------------|--------------|
| ① Registration/Information & Services | ④ Coffee Bar |
| ② Exhibitors | ⑤ Rest Area |
| ③ Internet Zone | ⑥ Checkroom |

2nd Floor



3rd Floor

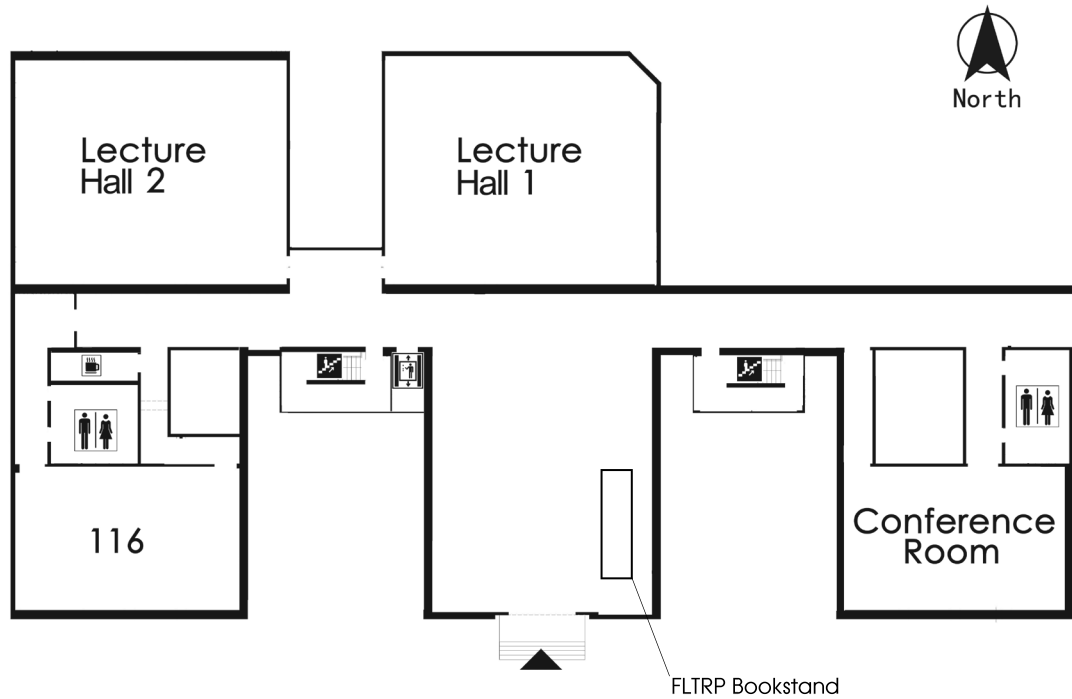


* More toilets on the 3rd floor.

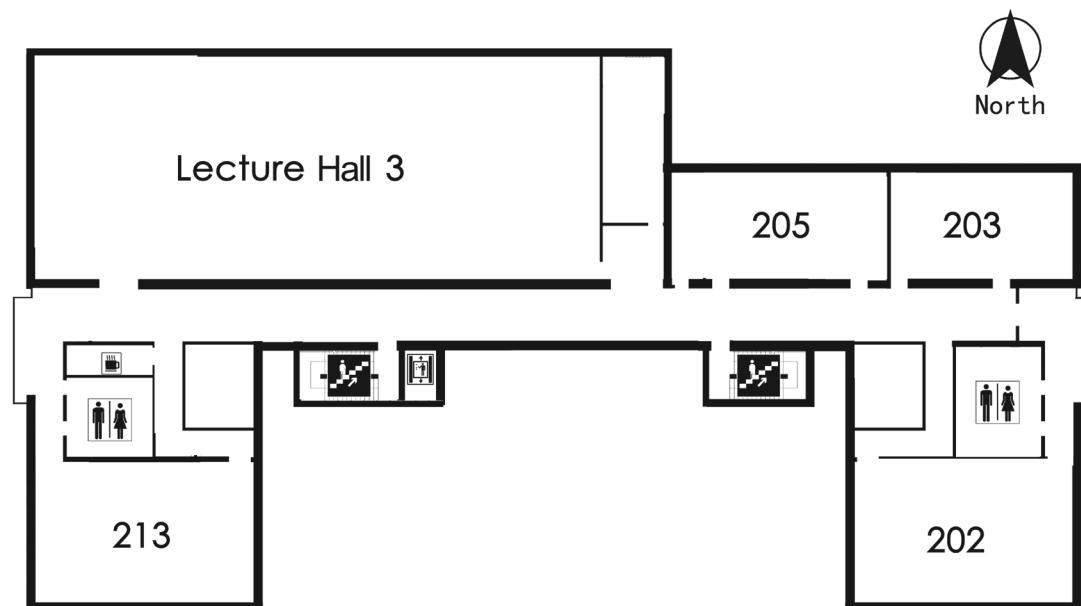
• Sir Shaw Run Run Building (SSRR)

Please note that most parallel sessions will take place in the following rooms in Sir Shaw Run Run Building.

1st Floor

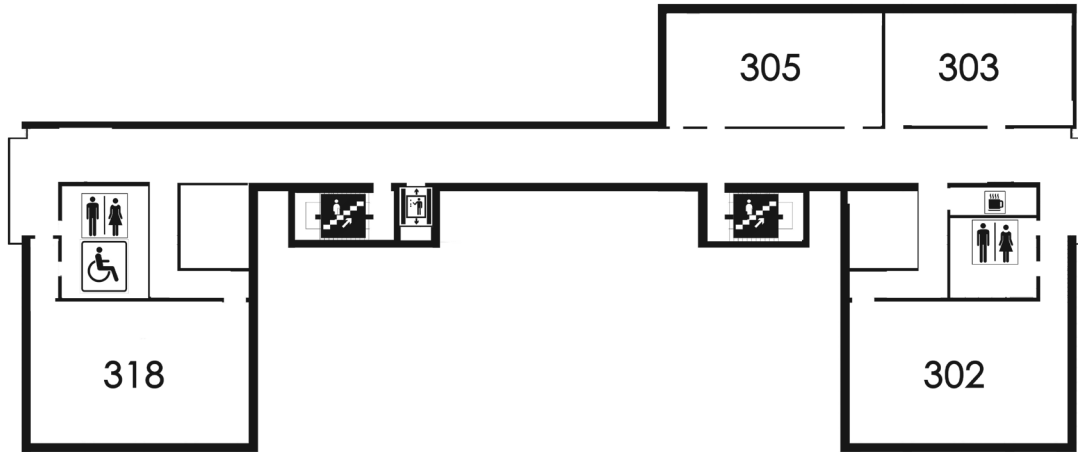


2nd Floor

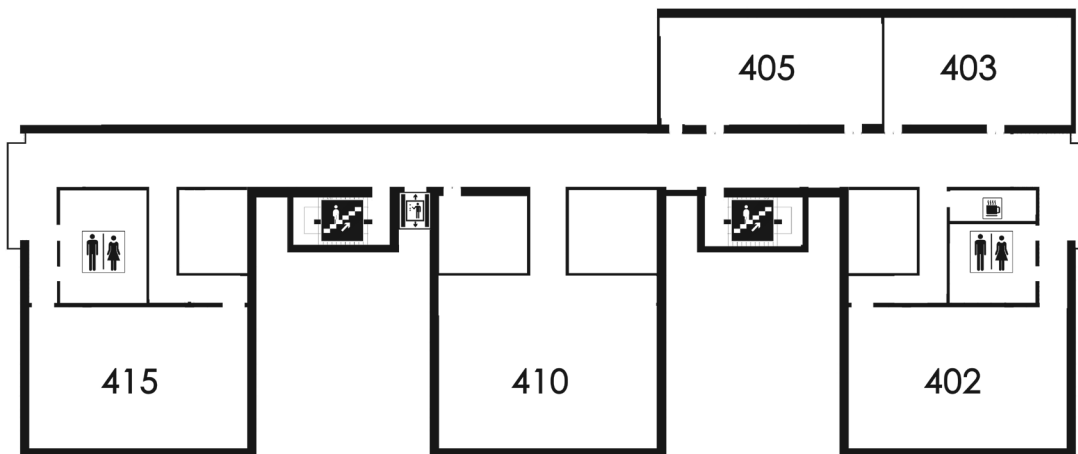


INFORMATION FOR ACADEMIC AILA

3rd Floor

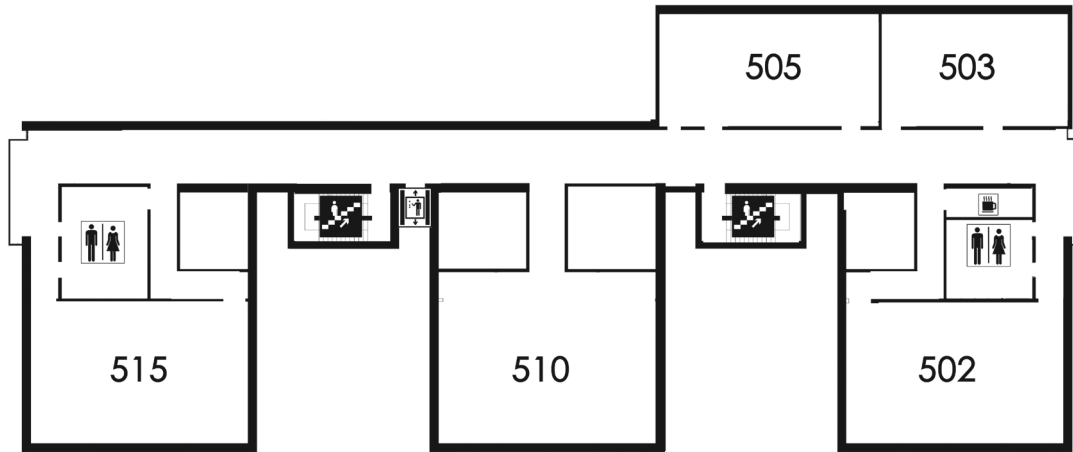


4th Floor

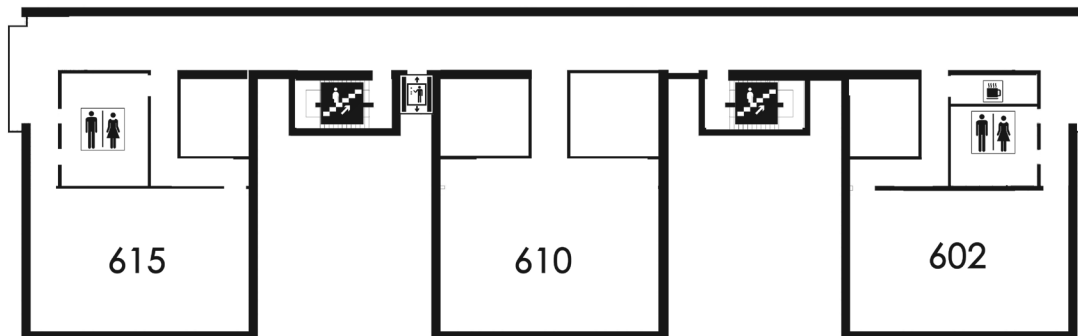


INFORMATION FOR ACADEMIC AILA

5th Floor



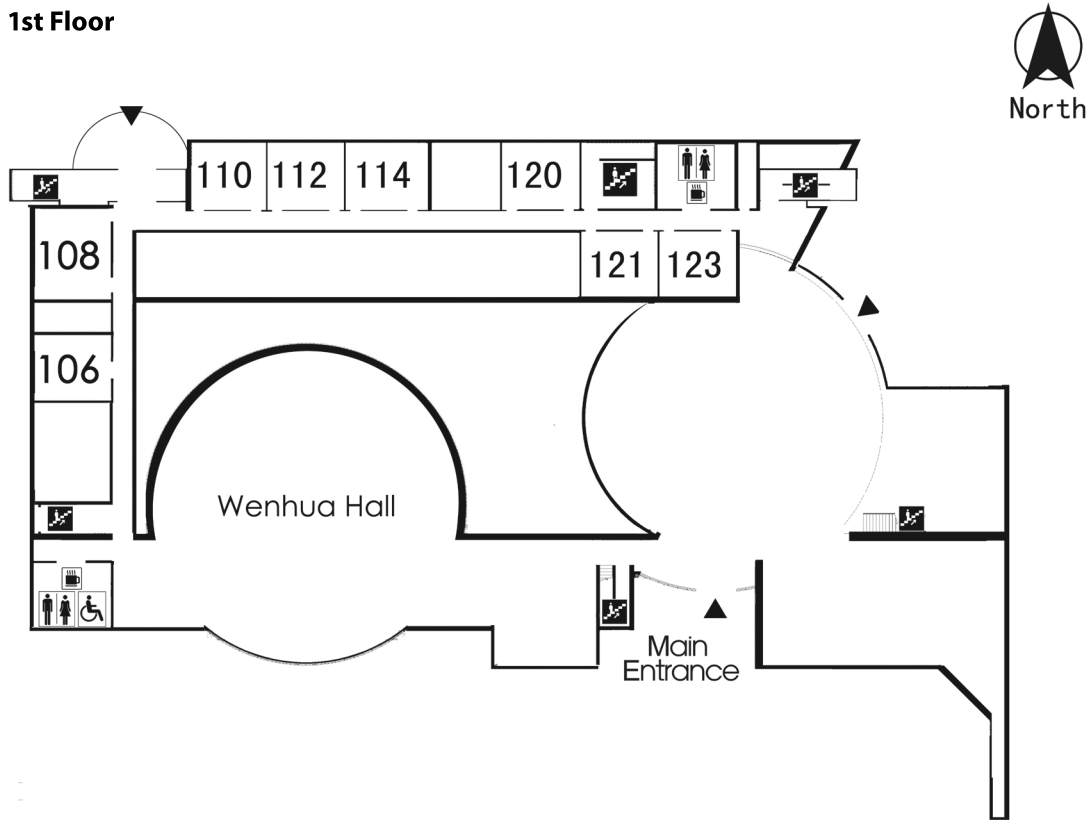
6th Floor



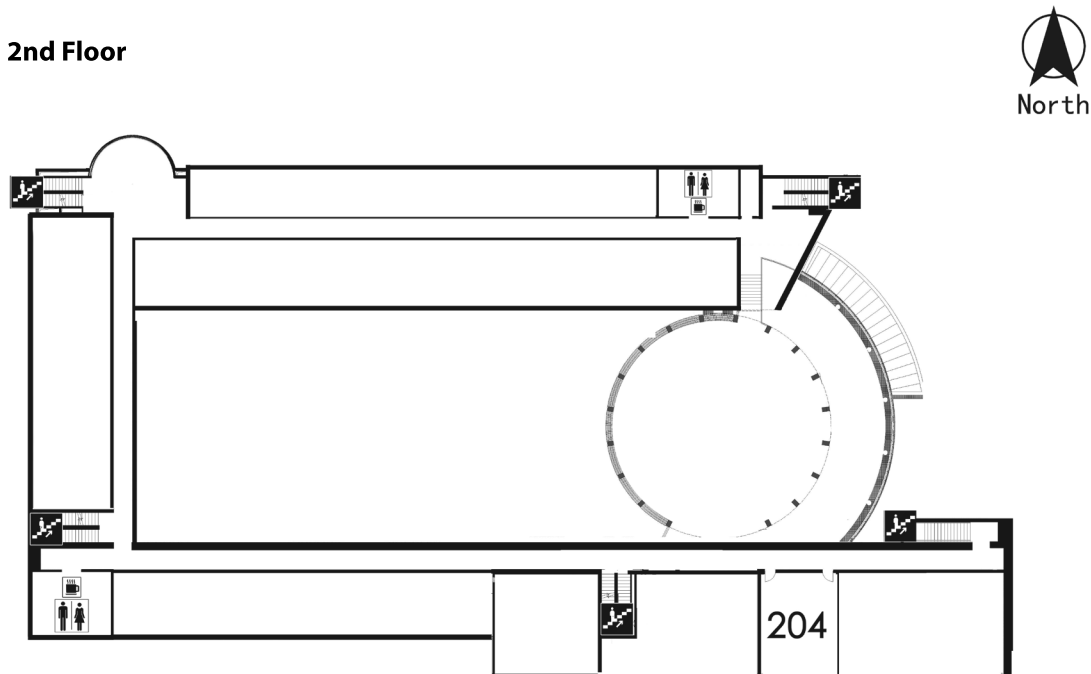
• School of Chinese Language and Literature (SCLL)

Some parallel sessions will take place in the following rooms in the School of Chinese Language and Literature.

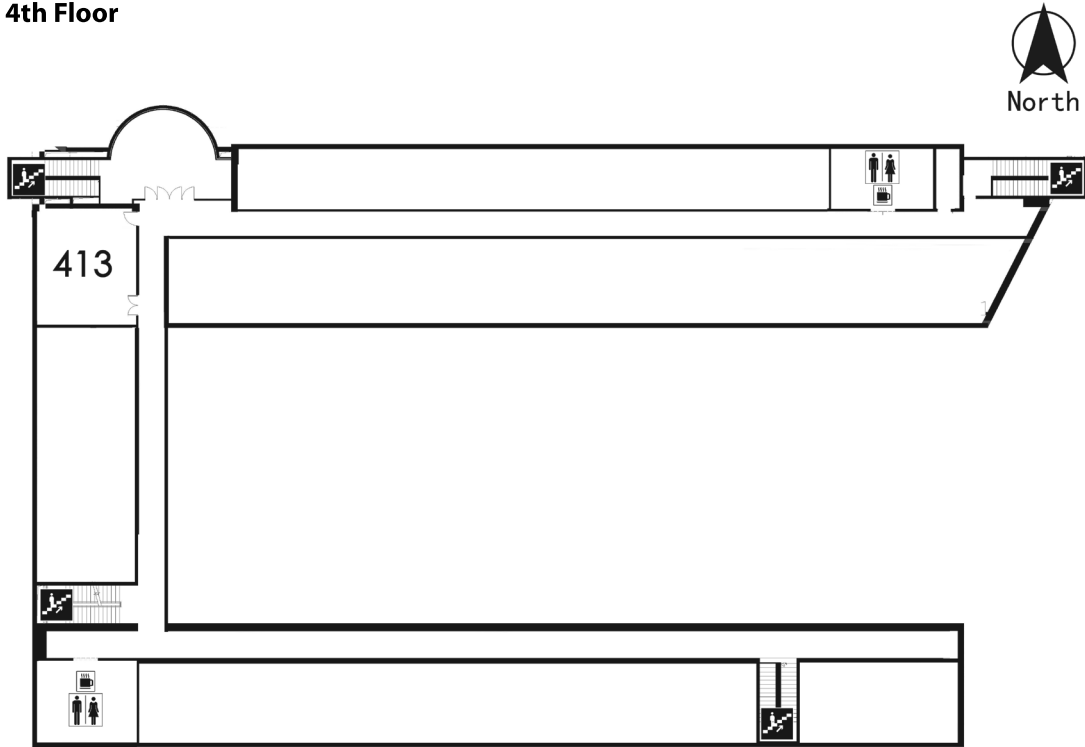
1st Floor



2nd Floor



4th Floor



3. Information for Presenters of Parallel Sessions and the Audience

• Equipment in Conference Rooms

- 1) A computer
- 2) A projector connected to the computer for playing PowerPoint
- 3) A microphone (in rooms with a capacity of 100+ people)
- 4) An electrical socket outlet
- 5) A blackboard or whiteboard
- 6) A laser pointer

Note:

If you need an overhead projector for films and slides, please ask the staff at Information & Services to install it in advance.

• Reminder for Paper Presenters

- You could prepare 30-50 copies of outline or full-text handouts for the audience.
- Please use the computer provided in the room allocated to your presentation. Do not use your own computer unless agreed beforehand.
- A certificate of presentation will be issued to those who have given the presentation at the scheduled time.
- If you won't be able to present your paper after you check in for the Congress due to emergency, please inform the Organizing Committee beforehand by telling the staff at Information & Services or writing to: organizing-aila2011@fltrp.com.

Individual Paper Presenters & Workshop Organizers

- 1) Please arrive at the allocated room **10 minutes** before the scheduled time of your presentation, and copy your PowerPoint to the computer provided.
- 2) If you do not appear 5 minutes after the scheduled starting time, your presentation will be cancelled. No make-up sessions will be arranged.
- 3) The allocated 30-minute individual paper

presentation time includes 20-minute speaking time + 10-minute Q & A session.

- 4) During the 30-minute presentation, reminding signs "5 minutes", "1 minute" and "Time Up!" will be shown to you by the coordinator.

Symposium Organizers & Presenters

- 1) Please arrive at the allocated room **10 minutes** before the scheduled time of your symposium, and copy your PowerPoint to the computer provided.
- 2) Please ensure the whole symposium finishes within the allocated time.

• Reminder for Poster Presenters

- 1) A board and pins are provided in the allocated room.
- 2) Please arrive at the allocated room **20 minutes** before the scheduled time of your presentation and fix your posters on the allocated board in time.
- 3) You are expected to be available at the poster display, in order to respond to questions from Congress participants.
- 4) Please take your posters away after the scheduled presentation is finished.
- 5) A certificate of presentation will be issued to those who have displayed their papers at the scheduled time.

• Intercultural Advice

- 1) It is impolite to take photos while others are doing their presentations since flashing disturbs both the speaker and the audience.
- 2) It is not proper to ask for the speaker's PPTs unless the speaker offers it.
- 3) It is not common for participants to have pictures taken with the speakers.

- 1) 请不要在他人发言时拍照，不停的闪光会分散发言人和听众的注意力。
- 2) 请不要要求拷贝发言人的PPT，除非发言人主动提供。
- 3) 请不要要求与发言人合影。

请参会者避免上述不妥行为。

4. Other Useful Information

• Lunch

Free lunch is provided for all Congress participants at the Dining Hall of BFSU from August 24 to 28. Lunch coupons are in the Congress bag you get when checking in for the Congress.

Menus will be put in front of the Dining Hall every day. All foods served are halal dishes. If you are a vegetarian, please inform the staff at Registration/Information & Services when checking in.

• Medical Service

The nearest hospital is BFSU Hospital. If you need any medical help, you may ask a volunteer to go there with you.

• PCs and Internet Availability

Several PCs are available in the Internet zone on the 1st floor of the Main Congress Building. Wireless access is available at all the conference venues. Please refer to the Internet password on the back of your badge.

• Copy Shops and Stores

Copy shops and stores are available at Campus BFSU. Please do not hesitate to ask any of our volunteers if you need any help.

• Newsstands and Public Phones

Two newsstands are located near Campus BFSU where you can buy magazines and newspapers. There are public pay phones at both newsstands.

• Telephone Cards

Telephone cards for calling overseas from a landline—IP Cards—are on sale at most newsstands and groceries at the official rate of RMB 100 for 30 to 45 minutes' talk time (but usually you can get them for RMB 50-70 if you bargain!) Making overseas phone calls by dialing direct from your hotel will be expensive.

Note:

To call overseas you must dial 00 followed by the country code and the number of the person you are calling.

The international code for China is 86. The code for Beijing is 10. For example, to call Beijing from Paris, you need to dial +86 10 followed by the eight-digit numbers.

• Banks and Cash Machines (ATMs)

There are three banks near BFSU: the Postal Savings Bank of China (inside the Weigongcun Post Office), the China Construction Bank and the Industrial and Commercial Bank of China.

- You can exchange currencies in the first two banks.
- Cash Machines (ATMs) can be found in each of these banks and on Campus BFSU as well, where you can withdraw RMB.

• Bookstore

FLTRP Bookstore is located next to the main entrance of East Campus BFSU. Tel: 86-10-88819915, website: <http://www.fltrpstore.com/>. There will be a bookstand of FLTRP on the 1st floor of Sir Shaw Run Run Building.

• Post Office

If you want to post anything during your stay, you may go to the Weigongcun Post Office, north to the West Campus BFSU.

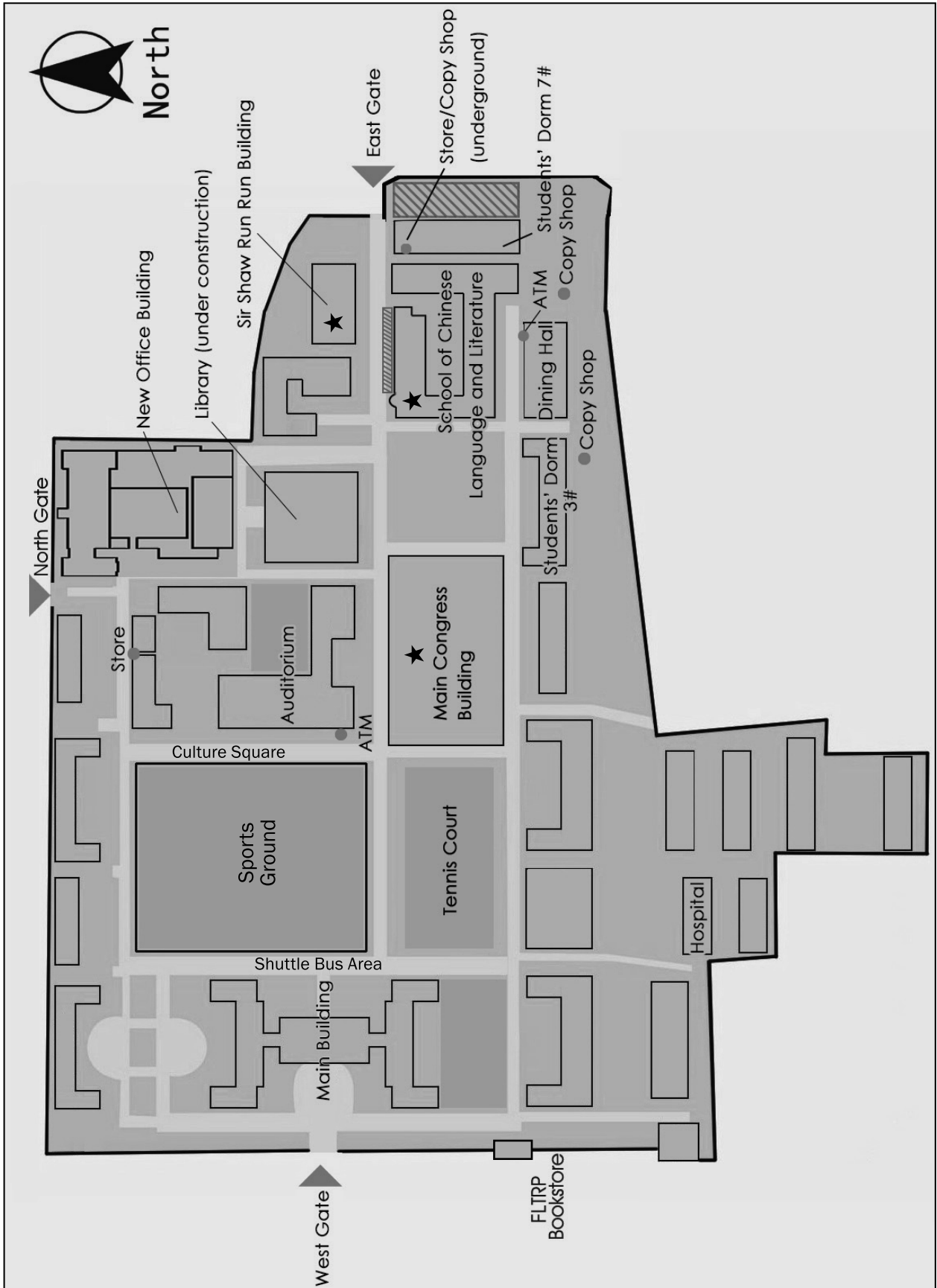
• Cafés and Bars

Several cafés are located near Campus BFSU, which provide you with a cozy environment to rest. There are several bars along the north side of Weigongcun Lu, where you can have a bottle of icy beer and enjoy a cool summer night in Beijing.

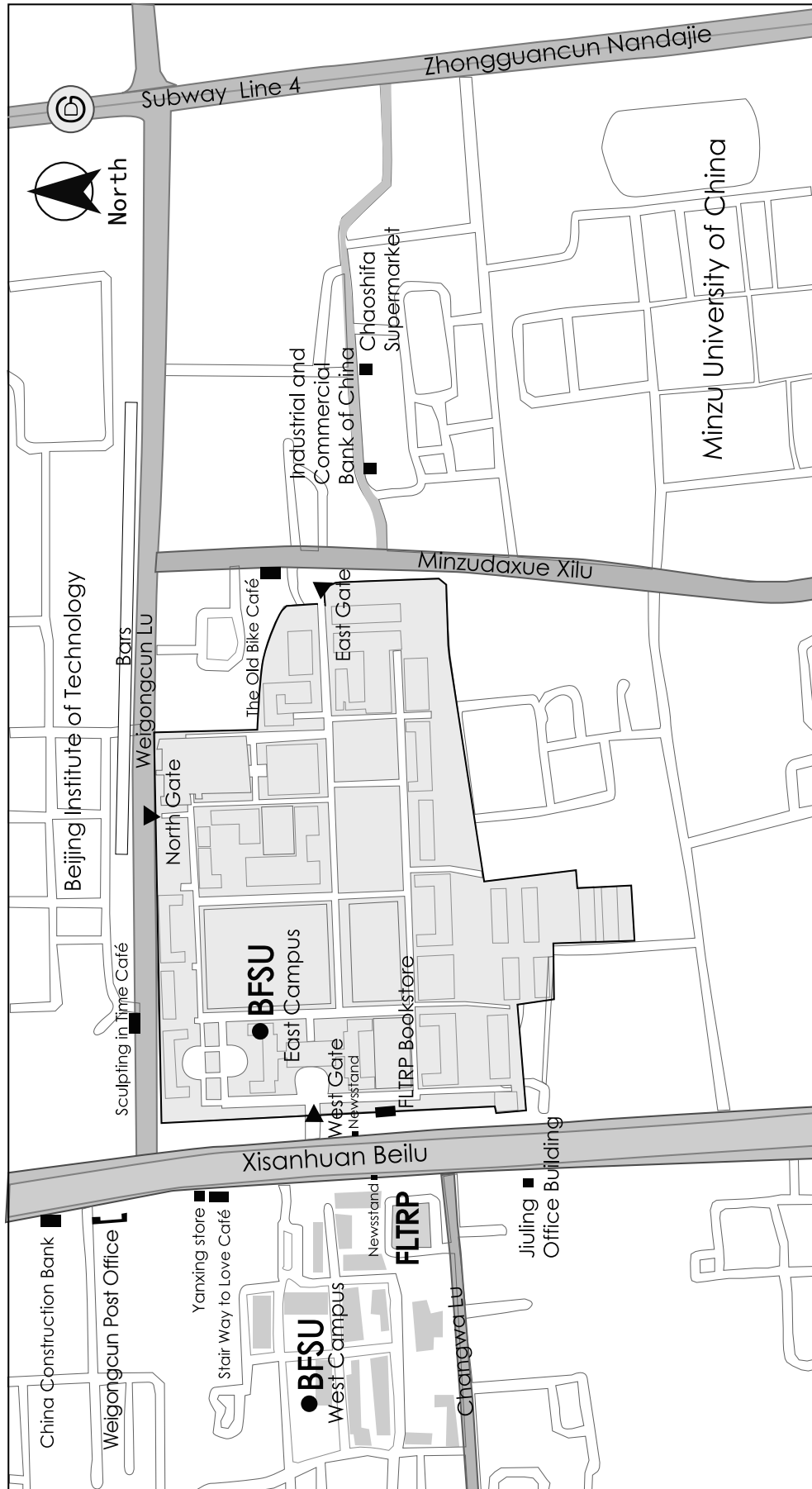
Note:

For all the places mentioned above, please see the maps on Pages 15-16.

• Map of East Campus BFSU



• Map of Surrounding Areas



5. Activities of Publishers

Time	Event	Publisher	Site
18:00-19:30 24th August	Routledge Wine Reception	Routledge	Routledge stand, 1st Floor, Main Congress Building
18:30-20:30 24th August	Springer Reception	Springer	1st Floor, School of Chinese Language and Literature
10:30-11:00 25th August	Digital Publishing in Higher Education @ FLTRP	FLTRP	Wenhua Hall, School of Chinese Language and Literature
18:30-19:30 25th August	FLTRP and De Gruyter Mouton Bridging International Intellectual Traditions: A Launch of the <i>Chinese Journal of Applied Linguistics</i> (International Edition) and the <i>Journal of English as a Lingua Franca</i>	FLTRP and De Gruyter Mouton	1st Floor, FLTRP Building
10:00-12:00 26th August	Multilingual Education and Publishing Forum	FLTRP	Wenhua Hall, School of Chinese Language and Literature
10:00-12:00 26th August	An Introduction to Publishing in Academic Journals: From Writing to Ranking By Christopher M. Tancock, Publisher of Elsevier Ltd.	Elsevier	Room 318, Sir Shaw Run Run Building
10:30-11:30 26th August	<i>Intercultural Interaction: A Multidisciplinary Approach to Intercultural Communication</i> ——A Book Presentation by Peter Franklin	FLTRP and Palgrave Macmillan	Conference Room, 1st Floor, Sir Shaw Run Run Building

6. Sponsors and Exhibitors

Sponsors

CYTS International Travel Co., Ltd.
 De Gruyter Mouton
 NetEase Youdao Information Technology (Beijing) Co., Ltd.
 Peter Lang Publishers
 Routledge (Taylor & Francis)

Exhibitors

• Cambridge University Press	Booth 11
• Cengage Learning	Booth 17
• Continuum International Publishing Group	Booths 9-10
• De Gruyter Mouton	Booths 20-21
• Edinburgh University Press	Booths 12-13
• Elsevier B.V.	Booths 3-5
• Emerald Group Publishing Limited	Booths 12-13
• Equinox Publishing Ltd.	Booths 12-13
• Foreign Language Teaching and Research Press (FLTRP)	Booths 24-25
• Higher Education Press	Booths 22-23
• Hodder Education	Booths 12-13
• John Benjamins Publishing Co.	Booth 19
• Multilingual Matters	Booth 18
• Oxford University Press	Booth 16
• Palgrave Macmillan	Booths 29-31
• Pearson International	Booth 36
• Routledge (Taylor & Francis)	Booths 6-8
• Shanghai Foreign Language Education Press	Booths 1-2
• Springer-Verlag GmbH	Booths 32-34
• University of Cambridge ESOL Examinations	Booth 35
• Wiley-Blackwell	Booths 14-15

* The publishers' display of books and journals is located at: **1st Floor, Main Congress Building.**

ALA 2011 Conference Guide

PART II

Information for Cultural AILA

- Brief Introduction of Beijing*
- Transportation*
- Congress Party*
- Hotels near BFSU*
- Restaurants*
- Tourist Attractions*
- Shopping*
- Chinese Pinyin and Useful Expressions*

1. Brief Introduction of Beijing

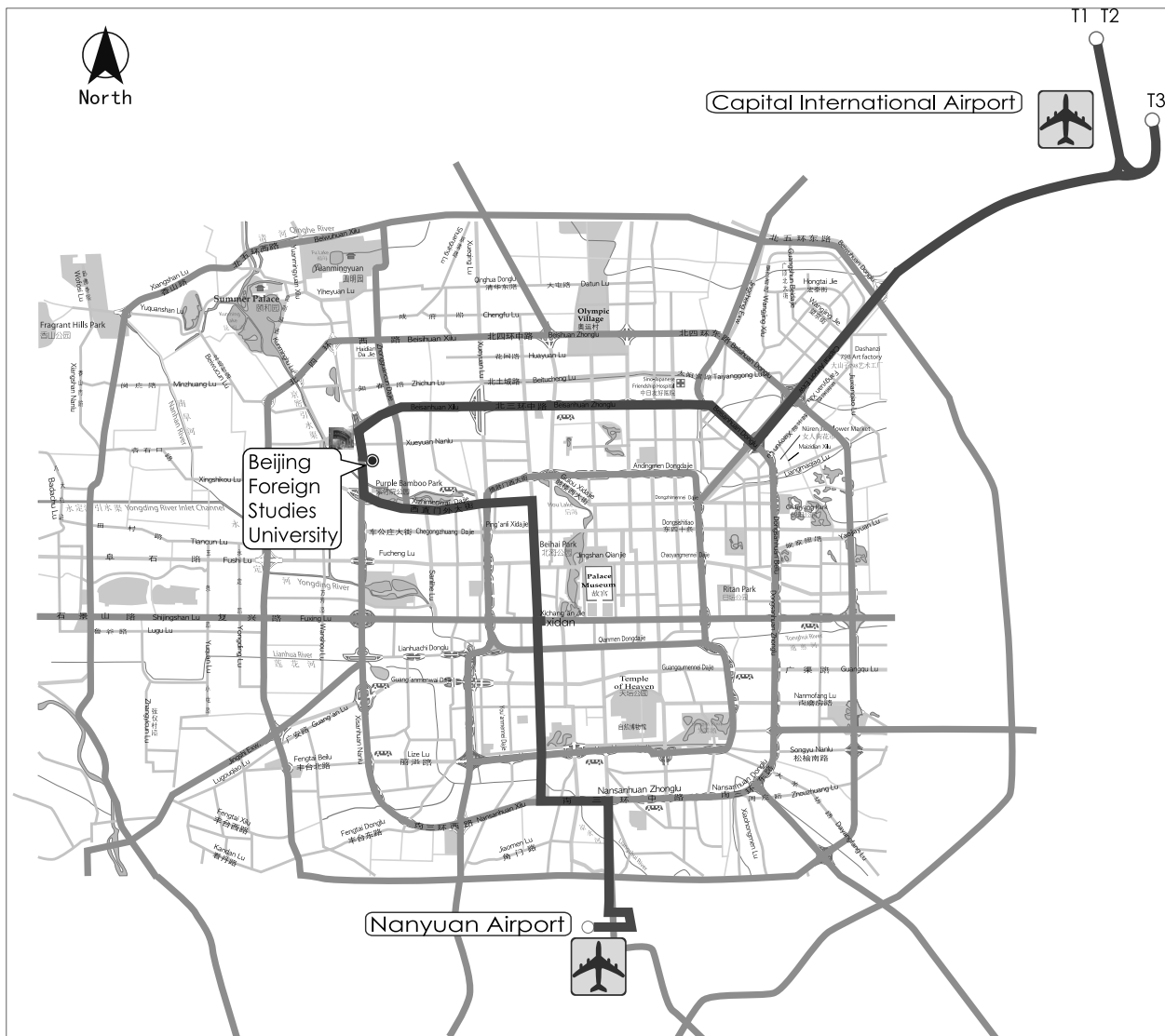
Beijing, which literally means “Northern Capital”, used to be known as Peking. It is not only one of the most populated cities in the world, but also one of the oldest inhabited sites by humans. Beijing has been developing very rapidly, especially after China’s reform and opening-up policy was carried out. It is the political, cultural and economic center of the country.

The city, with an immense area of over 16,000 square kilometers which is divided into 14 districts and two counties, is well on its way of fast development by blending modern achievements with lingering traditional flavors together.

Reflected in the glass walls of skyscrapers and office blocks are gilt roofs and scarlet walls of imperial palaces and gardens; besides expressways and trestles of bustling traffic are zigzagging narrow hutongs where the daily life of Beijingers hums with activity; Peking operas are played while at the same time hip-hop and rocks can be heard too. The charm of this mixture attracts millions of foreigners and still more Chinese to the city every year. Thanks to the 29th Olympic Games in 2008, the city has become more and more the focus of the world’s attention and an ever-expanding international stage for people from different cultures. More than ever before, Beijing is open to the world with its historic heritage, modern development and promising future.

2. Transportation

• Airports



◎ Beijing Capital International Airport (BCIA) → Beijing Foreign Studies University (BFSU)

Taxi: about RMB 110

Downtown shuttle: RMB 16/per person (single trip). Take the line heading for Gongzhufen, get off at Suzhouqiao, and walk about 300 meters south.

Subway:

Route 1: BCIA Express (RMB 25) → Sanyuanqiao, transfer to Line 10, get off at Suzhoujiekou (RMB 2), and take a taxi to BFSU (RMB 10).

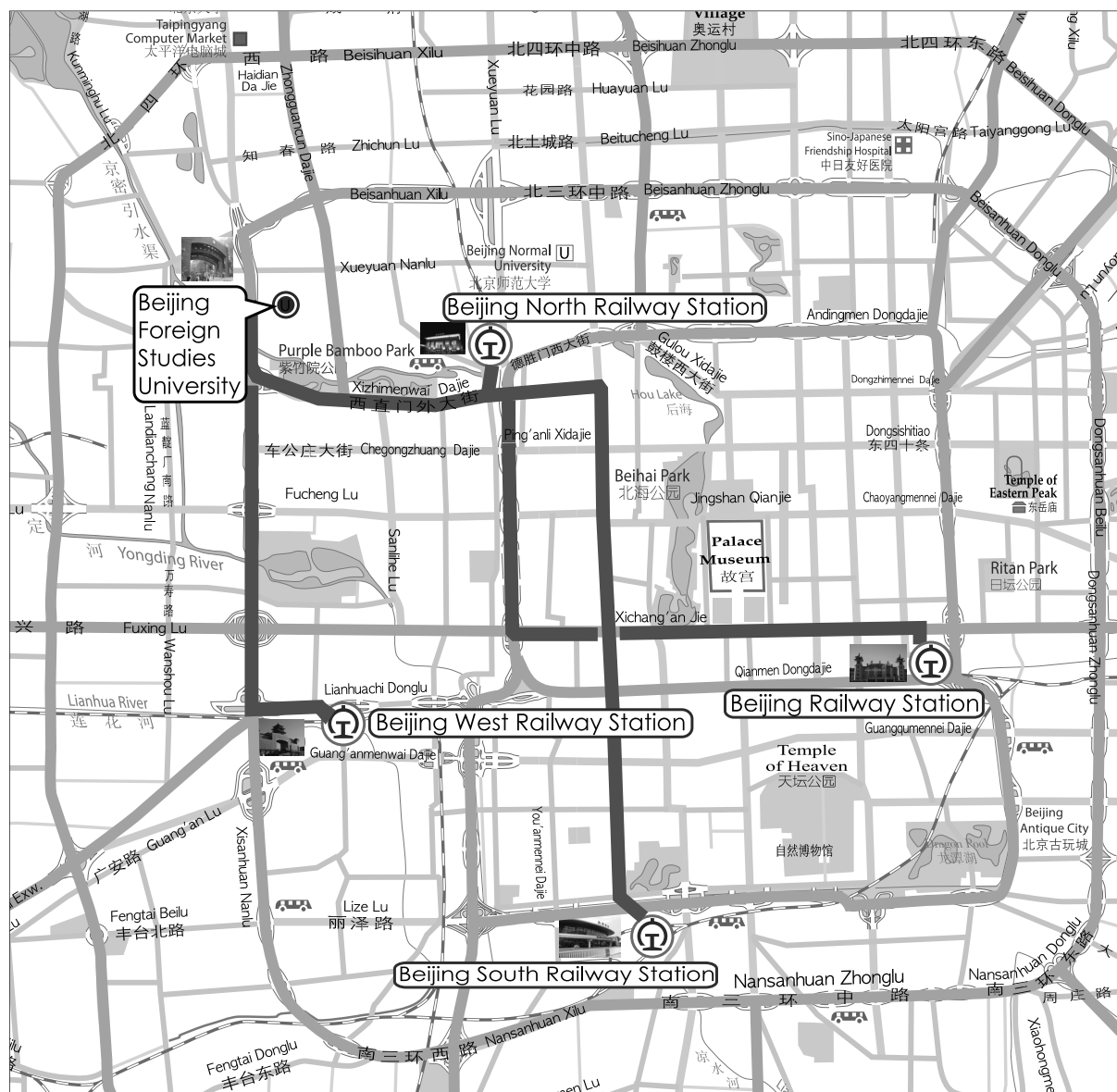
Route 2: BCIA Express (RMB 25) → Dongzhimen, transfer to Line 2, then to Line 4, get off at Weigongcun (RMB 2), and walk about 10 minutes to BFSU.

◎ Beijing Nanyuan Airport → Beijing Foreign Studies University (BFSU)

Taxi: about RMB 80

Downtown shuttle: RMB 16/per person (single trip). Nanyuan Airport → Xidan, get off at Xidan (RMB 16), transfer to subway Line 4, get off at Weigongcun (RMB 2), and walk about 10 minutes to BFSU.

• Railway Stations



◎ Beijing Railway Station → Beijing Foreign Studies University (BFSU)

Taxi: about RMB 60

Subway: Take Line 2 to Xizhimen, transfer to Line 4, get off at Weigongcun (RMB 2), and walk about 10 minutes to BFSU.

◎ Beijing South Railway Station → Beijing Foreign Studies University (BFSU)

Taxi: about RMB 50

Subway: Take Line 4 to Weigongcun (RMB 2), and walk about 10 minutes to BFSU.

◎ Beijing West Railway Station → Beijing Foreign Studies University (BFSU)

Taxi: about RMB 25

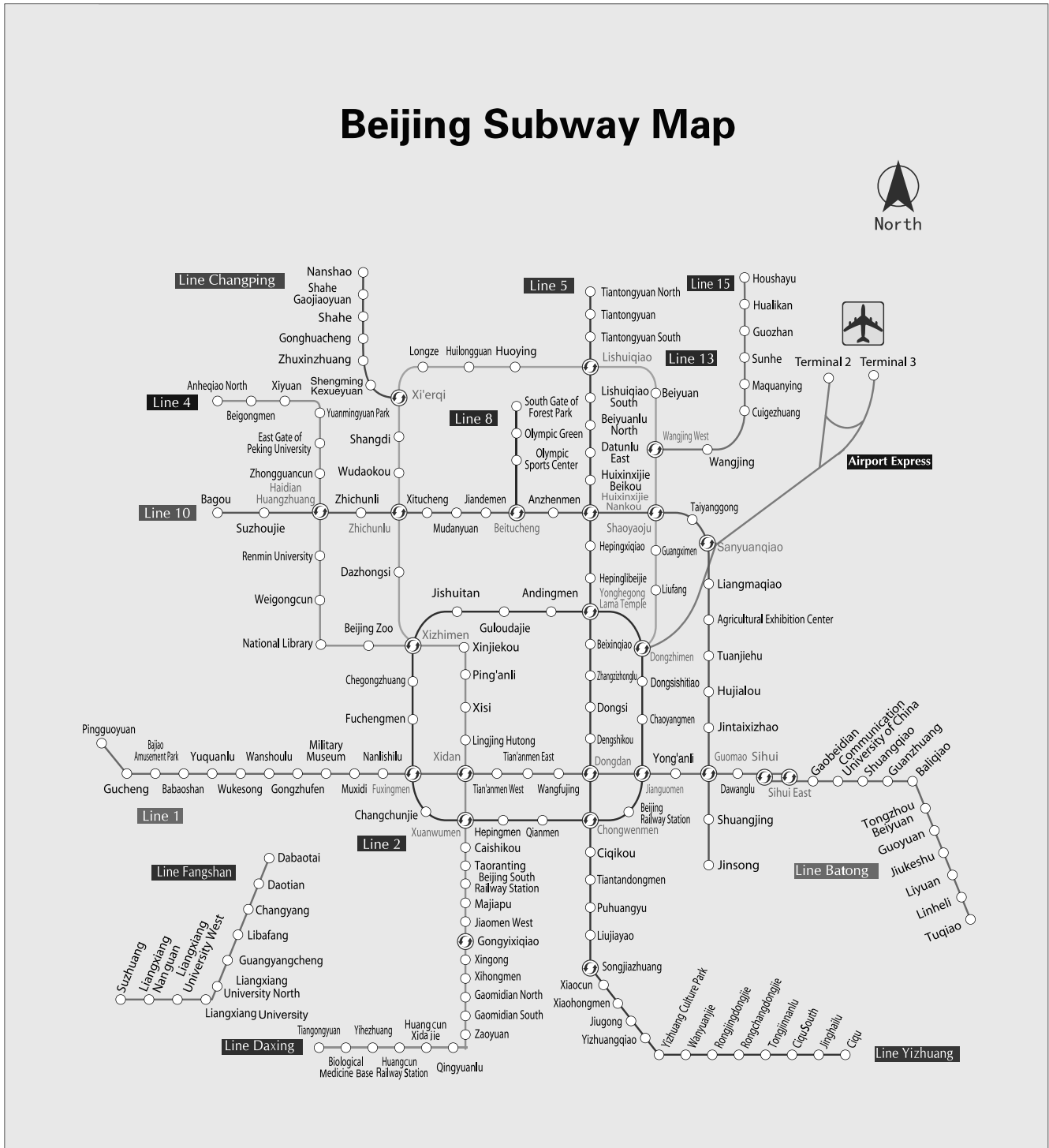
Bus: Take Bus 374 and get off at Weigongqiao (RMB 1).

◎ Beijing North Railway Station → Beijing Foreign Studies University (BFSU)

Taxi: about RMB 20

Bus: Take Bus 563, get off at Weigongcunlu Xikou (RMB 1), and walk about 3 minutes to BFSU.

• Beijing Subway Map



• Traffic Warnings

The most important thing you should pay highest attention to during your travels is traffic safety. In China, **the traffic keeps to the right**. Below are some detailed practical tips for keeping you safe whether you are on foot, cycling, or in a vehicle:

When Walking

Walk on the sidewalk and be careful of motor vehicles. Watch for the traffic when crossing the road even when you are using a pedestrian crossing.

When Riding a Bike

It is safest to take the bicycle path when cycling. Be more careful at rush hours. Please pay attention to pedestrians who cross the road in front of you.

When on a Bus

It is important to be careful and guard against theft. Fastening your seat belt especially when on the expressway may save your life in an accident. Have some medication on hand for travel sickness.

When Self-Driving

Find out about the road conditions and make sure you have your seat belt fastened at all times. Do not drive if you are fatigued or after drinking alcohol. Do not speed and do not park your car inappropriately. Conform to the traffic laws and give way to pedestrians.

If involved in a traffic accident, please immediately report the accident to the police (call 122 or 110). If you can speak a little Chinese this may help, but if necessary, contact the branch of your embassy or consulate in China.

Note:

The address and contact information of BFSU in Chinese is printed on the back of your badge. You may show it to the taxi driver, or use it whenever you are in need.

3. Congress Party

The Congress Party will take place at Four Points by Sheraton Beijing on August 26. Scholars from different parts of the world will gather together to spend an unforgettable evening in an environment featuring traditional Chinese culture. Classical Chinese music and traditional folk performance will give you a relaxing and rich experience.

Buffet with Chinese and Western cuisine provided.

Program of the Congress Party:

- Classical Chinese music
- Peking Opera: Face off
- Traditional folk performance: sugar figurine, dough figurine, artistic calligraphy
- Songs and dances by Congress participants

Time: 19:30, 26th August, 2011

Place: Four Points by Sheraton Beijing (Tower 1, 25 Yuanda Lu, Haidian District, Beijing)

Four Points by Sheraton Beijing is very close to the Golden Resource New Yansha Mall. It takes about 15-20 minutes from there to the Zhongguancun High-tech Creative District and the main university area.

Price: RMB 260/person

Telephone (Four Points by Sheraton): (86) 10-88898888

Transportation

◎ **BFSU → Four Points by Sheraton Beijing**

- Shuttle Bus: Leave at **19:00** from the Shuttle Bus Area of East Campus BFSU.
- Taxi: Less than 10 minutes from BFSU, about RMB 10.

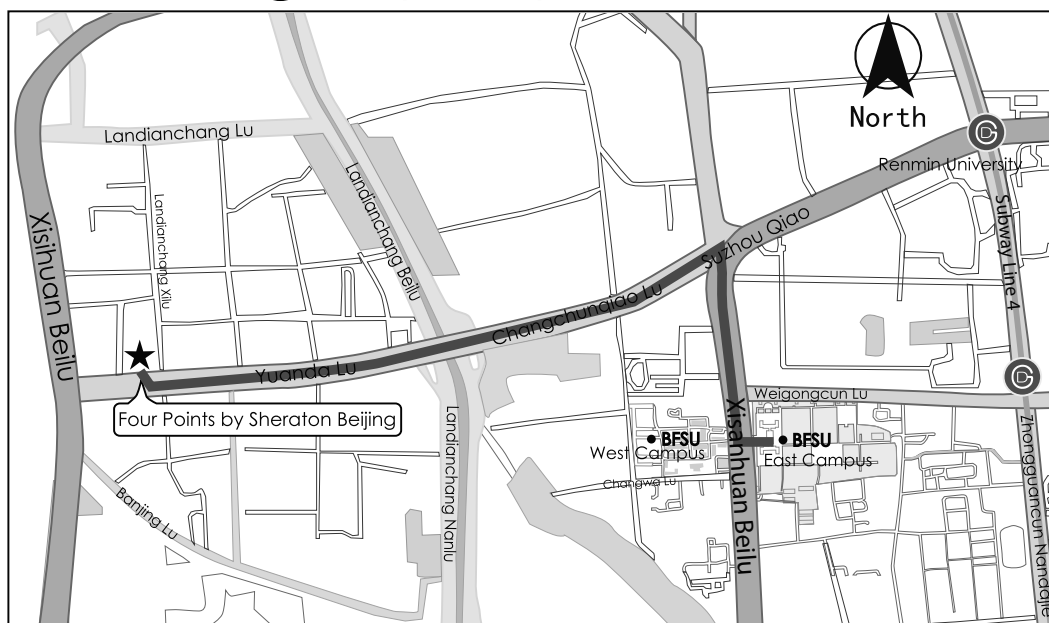
Note for those having the half-day tour:

After the half-day tour, the coach will take the Congress Party participants to the Four Points by Sheraton Beijing first, then will stop at Huang Yuan Hotel, Shangri-La Hotel, Beijing Friendship Hotel and finally arrive at BFSU.

◎ **Four Points by Sheraton Beijing → BFSU**

- Shuttle Bus: Leave at **22:00** from the Four Points by Sheraton Beijing. It will first stop at Huang Yuan Hotel, then Shangri-La Hotel, Beijing Friendship Hotel and finally at BFSU.
- Taxi: Less than 10 minutes, about RMB 10.

All Congress participants are welcome!



Booking: 1st Floor, Main Congress Building
Telephone: (86) 10-88818911/8912

大会联欢

本届大会联欢将于8月26日晚在北京海淀区永泰福朋喜来登酒店举行,晚宴期间来自不同国家与文化的学者将齐聚一堂,在富有中国传统特色的典雅环境中畅谈交流,陶冶身心,并将欣赏到中国民乐演奏、民俗表演等。专设自助晚餐,包括各种精心制作的中式、西式佳肴。

联欢节目:

中国民乐演奏

京剧表演:变脸

中国传统手工艺:糖人、面人、艺术字

与会代表歌舞联欢

时间: 8月26日晚19:30

地点: 北京海淀永泰福朋喜来登酒店(北京市海淀区远大路25号A座)

北京海淀永泰福朋喜来登酒店位于北京海淀区,与大型综合购物中心——金源燕莎购物中心仅一步之遥。距离中关村高新科技产业园和主要高校只需数十分钟车程。

价格: 260元/人

酒店电话: (86) 10-88898888

往返交通:

◇ 北京外国语大学 → 永泰福朋喜来登酒店

班车: 8月26日晚19:00,从北外东院巴士停车区出发。
出租车: 约10分钟车程,10元左右。

半日游参会者提示:

半日游结束之后,旅游巴士将首先把参加大会联欢的代表送到永泰福朋喜来登酒店,然后再依次到达皇苑大酒店、香格里拉酒店、友谊宾馆,最后到达北京外国语大学。

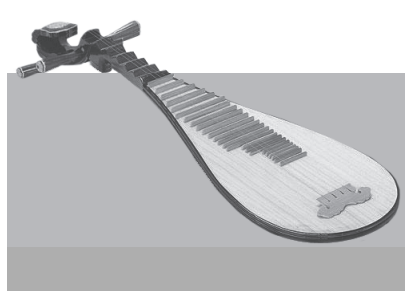
◇ 永泰福朋喜来登酒店 → 北京外国语大学

班车: 8月26日晚22:00,从永泰福朋喜来登酒店出发,依次到达皇苑大酒店、香格里拉酒店、友谊宾馆,最后到达北京外国语大学。
出租车: 约10分钟车程,10元左右。

盛情欢迎各国与会者参加!

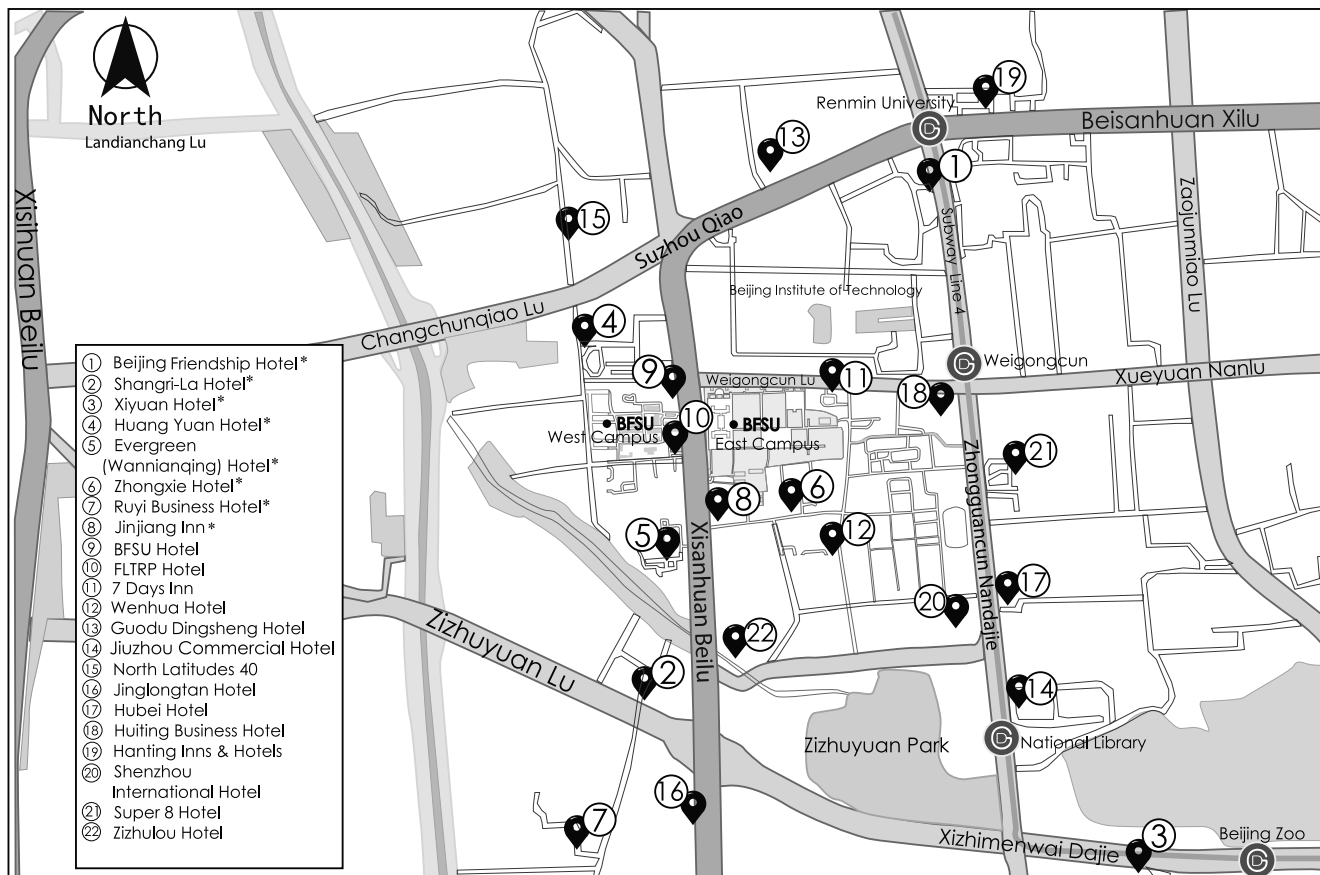
报名: 主会场一层

电话: (86) 10-88818911/8912



4. Hotels near BFSU

We have provided an overview of 8 hotels close to BFSU on our website: www.aila2011.org. Additionally, we provide the locations of 14 more hotels near BFSU.



***1. Beijing Friendship Hotel 北京友谊宾馆**

Tel: (86) 10-68498080/8880

Address: No. 1 Zhongguancun Nandajie, Haidian District

***2. Shangri-La Hotel 香格里拉饭店**

Tel: (86) 10-68412211

Address: No. 29 Zizhuyuan Lu, Haidian District

***3. Xiyuan Hotel 西苑饭店**

Tel: (86) 10-68313388

Address: No. 1 Sanlihe Lu, Haidian District

***4. Huang Yuan Hotel 皇苑大酒店**

Tel: (86) 10-68413388

Address: No. 19 Changwa Lu, Haidian District

***5. Evergreen (Wannianqing) Hotel 万年青宾馆**

Tel: (86) 10-88568451/7720

Address: No. 25 Xisanhuan Beilu, Haidian District
(Inside China Youth University for Political Sciences)

***6. Zhongxie Hotel 中协宾馆**

Tel: (86) 10-68413355

Address: No. 22 Fahuasi Lu, Haidian District

***7. Ruyi Business Hotel 如意商务酒店**

Tel: (86) 10-51906666

Address: No. 17 Beiwa Lu, Haidian District

***8. Jinjiang Inn 锦江之星 (苏州桥店)**

Tel: (86) 10-68433388

Address: No. Jia-28 Wanshousi Beilu, Haidian District

Note: The first eight hotels (with *) are the contracted hotels of the Congress.

INFORMATION FOR CULTURAL AILA

9. BFSU Hotel 北外宾馆

Tel: (86) 10-88816902

Address: No. 19 Xisanhuan Beilu, Haidian District

10. FLTRP Hotel 外研社宾馆

Tel: (86) 10-88819200

Address: No. 19 Xisanhuan Beilu, Haidian District
(Inside FLTRP)

11. 7 Days Inn 7天连锁酒店(魏公村店)

Tel: (86) 10-88411855

Address: Building 6, No. 8 Weigongcun Lu, Haidian District

12. Wenhua Hotel 文华酒店

Tel: (86) 10-68706383

Address: No. Jia-4 Wanshousi, Haidian District (Inside Central Institute of Socialism)

13. Guodu Dingsheng Hotel 国都鼎盛大酒店

Tel: (86) 10-62612266

Address: No. Jia-49 Beisanhuan Xilu, Haidian District

14. Jiuzhou Commercial Hotel (former Olympic Hotel)

九州商务酒店(原奥林匹克饭店)

Tel: (86) 10-62197778

Address: No. 52 Zhongguancun Nandajie, Haidian District

15. North Latitudes 40 北纬四十度大酒店

Tel: (86) 10-51297777

Address: Building 8, Xinqidian Residential Area, No. 5 Changchunqiao Lu, Haidian District

16. Jinglongtan Hotel 金龙潭大酒店

Tel: (86) 10-88811188

Address: No. 71 Xisanhuan Beilu, Haidian District

17. Hubei Hotel 湖北大厦

Tel: (86) 10-62172288

Address: No. 36 Zhongguancun Nandajie, Haidian District

18. Huiting Business Hotel 慧廷商务酒店

Tel: (86) 10-68416825

Address: No. 11 Zhongguancun Nandajie, Haidian District

19. Hanting Inns & Hotels 汉庭快捷酒店(四通桥店)

Tel: (86) 10-68420808

Address: Building A Yiyuan Garden, Friendship Hotel, No. 1 Zhongguancun Nandajie, Haidian District

20. Shenzhou International Hotel 神舟国际酒店

Tel: (86) 10-68197333

Address: No. 31 Zhongguancun Nandajie, Haidian District

21. Super 8 Hotel 速8酒店(魏公村店)

Tel: (86) 10-82590354

Address: No. 25 Zhongguancun Nandajie, Haidian District

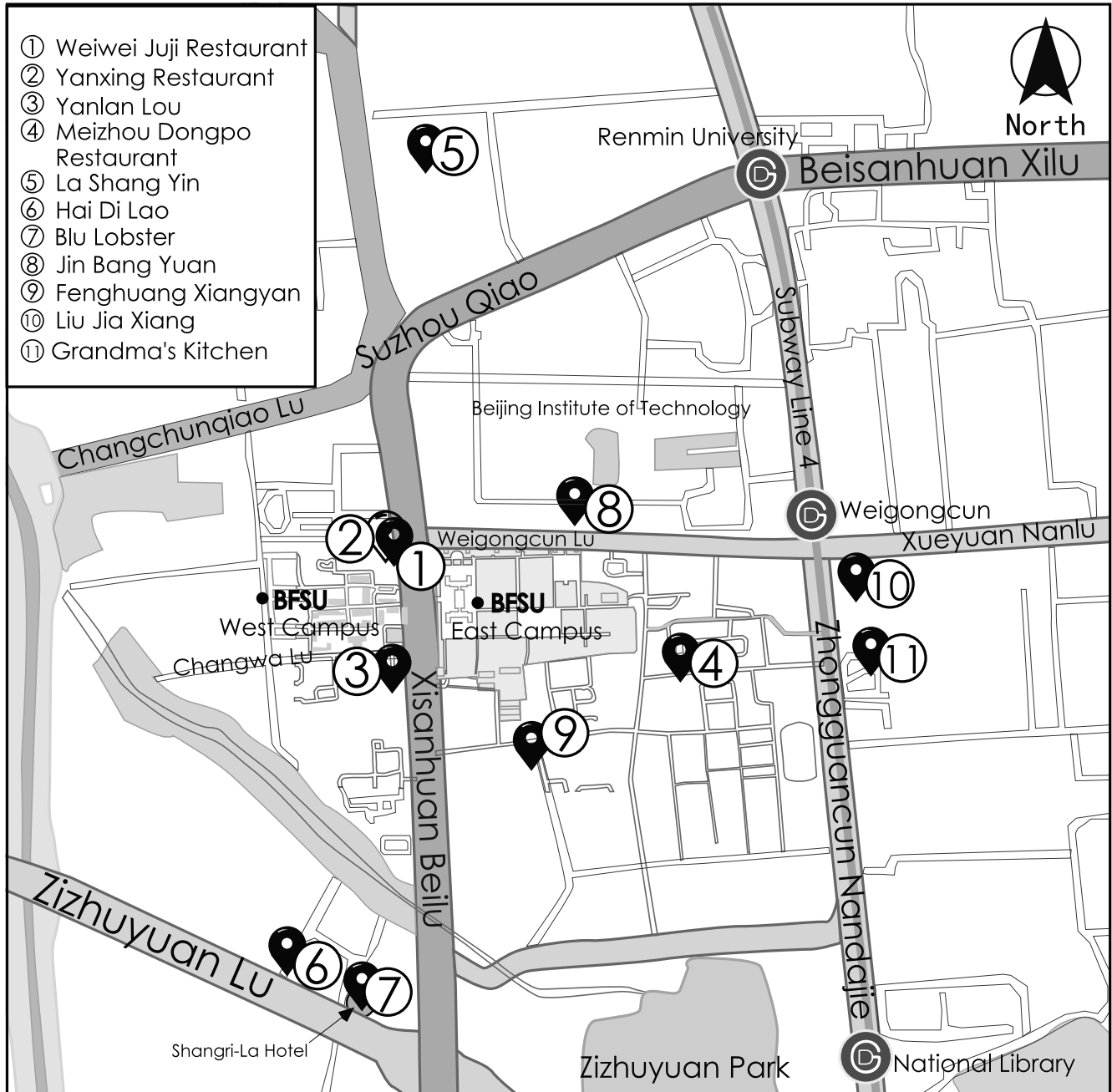
22. Zizhulou Hotel 紫竹楼宾馆

Tel: (86) 10-68427958

Address: Wanshousi Lu, Zizhuqiao, Haidian District

5. Restaurants

• Restaurants near BFSU



Weiwei Juji Restaurant 威威焗鸡王酒楼

The restaurant features Cantonese cuisine.

- **Tel:** (86) 10-88816908
- **Location:** No. 19 Xisanhuan Beilu, Haidian District (1st Floor of BFSU Hotel)
- **Specialties:** salt-baked chicken, Cantonese tea and dim sum
- **Average cost:** RMB 70/per person
- **Transportation:** North to the gate of West Campus BFSU, about 2 minutes' walk

Yanxing Restaurant 燕兴大酒楼

The restaurant features Shandong cuisine.

- **Tel:** (86) 10-68466319/6321
- **Location:** No. 13 Xisanhuan Beilu, Haidian District
- **Specialties:** *sanbuzhan* (scrambled eggs with starch and sugar), sauted sea cucumber with scallion
- **Average cost:** RMB 50/per person
- **Transportation:** North to the gate of West Campus BFSU, about 3 minutes' walk.

Yanlan Lou 燕兰楼

The restaurant features halal dishes.

- **Tel:** (86) 10-68403131/3138
- **Location:** No. 21 Xisanhuan Beilu, Haidian District
- **Specialties:** grilled mutton, beef noodle, yogurt, nan (a kind of crusty pancake of the Uyghur ethnic group)
- **Average cost:** RMB 70/per person
- **Transportation:** South to Foreign Language Teaching and Research Press (FLTRP), about 2 minutes' walk.

Meizhou Dongpo Restaurant 眉州东坡酒楼

The restaurant features Sichuan cuisine and snacks.

- **Tel:** (86) 10-88413156
- **Location:** No. 18 Minzudaxue Beilu, Weigongcun, Haidian District
- **Specialties:** braised Dongpo pork with brown sauce, spicy noodles
- **Average cost:** RMB 50/per person
- **Transportation:** About 10 minutes' walk from the east gate of East Campus BFSU.

La Shang Yin 辣尚瘾

The restaurant features Sichuan cuisine.

- **Tel:** (86) 10-82650566
- **Location:** No. 68 Wanquanhe Lu, Haidian District (100 meters south to the west gate of Renmin University)
- **Specialties:** grilled fish, spicy pot
- **Average cost:** RMB 50/per person
- **Transportation:** Taking a taxi is suggested, about RMB 10.

———— **Hai Di Lao 海底捞** ————

The restaurant features hotpot.

- **Tel:** (86) 10-68716676
- **Location:** No. 4 Beiwa Lu, Zizhuyuan, Haidian District
- **Specialties:** hotpot
- **Average cost:** RMB 75/per person
- **Transportation:** Taking a taxi is suggested, about RMB 10.

———— **Blu Lobster 蓝韵西餐厅** ————

The restaurant features Western-style food.

- **Tel:** (86) 10-68412211-6727
- **Location:** No. 29 Zizhuyuan Lu, Haidian District (inside Shangri-La Hotel)
- **Specialties:** steak, lobster, foie gras
- **Average cost:** RMB 600/per person
- **Transportation:** Taking a taxi is suggested, about RMB 10.

———— **Jin Bang Yuan 金榜缘** ————

The restaurant features Chinese home-style cooking.

- **Tel:** (86) 10-68911910
- **Location:** No. 5 Zhongguancun Nandajie, Haidian District (beside the south gate of Beijing Institute of Technology)
- **Specialties:** fish filets in hot chili oil
- **Average cost:** RMB 40/per person
- **Transportation:** About 5 minutes' walk from East Campus BFSU.

———— **Fenghuang Xiangyan 凤凰湘宴** ————

The restaurant features Hunan cuisine.

- **Tel:** (86) 10-68417076
- **Location:** No. Jia-2, Wanshousi, Haidian District
- **Specialties:** braised chicken
- **Average cost:** RMB 60/per person
- **Transportation:** About 10 minutes' walk from East Campus BFSU.

———— **Liu Jia Xiang 刘家香** ————

The restaurant features Zhejiang cuisine.

- **Tel:** (86) 10-62185688
- **Location:** No. 43 Zhongguancun Nandajie, Haidian District
- **Specialties:** beancurd leaf rolls with minced pork, fish dumplings, crispy durian cakes
- **Average cost:** RMB 70/per person
- **Transportation:** Taking a taxi is suggested, about RMB 10.

———— **Grandma's Kitchen 外婆家** ————

The restaurant features Zhejiang cuisine.

- **Tel:** (86) 10-62156325
- **Location:** No. Jia-18 Zhongguancun Nandajie, Haidian District
- **Specialties:** stewed chicken with tea flavor, sweet and sour spareribs, steamed lotus root stuffed with sweet sticky rice
- **Average cost:** RMB 40/per person
- **Transportation:** Taking a taxi is suggested, about RMB 10.

• Famous Restaurants in Beijing

————— Mei Fu 梅府 —————

The restaurant features fresh and light Shanghai food. Decorated like a 1930's Shanghai boudoir, it is initially created by the Peking Opera master Mei Lanfang.

- Tel: (86) 10-66126847
- Location: No. 24 Daxiangfeng Hutong, south bank of Houhai Lake, Xicheng District
- Specialties: perch with spicy sauce, chicken porridge

————— Donglaishun Restaurant 东来顺 —————

The most authentic Muslim restaurants in Beijing, featuring instant-boiled lamb hotpot.

- Tel: (86) 10-51901730
- Location: D-3, Chengming Building, No. 2 Xizhimennei Dajie, Xicheng District
- Specialties: lamb hotpot

————— Shunyi Fu 顺一府饺子馆 —————

One of the best *jiaozi* (dumplings) restaurants in the city: thirty-odd different varieties. The carrot and lamb, chicken and mushroom dumplings, as well as the *guotie* (grilled in Shanghai style) are very tasty.

- Tel: (86) 10-65281960
- Location: No. 36-3 Ganyu Hutong (a small road alongside, to the right, Wangfujing Church), Dongcheng District
- Specialties: *Jiaozi* (dumplings), *guotie*, tofu

————— Jiangnan Fu 江南赋 —————

The restaurant features Hangzhou cuisine and Cantonese cuisine.

- Tel: (86) 10-88451015
- Location: Golden Resource New Yansha Mall, No. 1 Yuanda Lu, Haidian District
- Specialties: Dongpo pork, marinated duck, silver piece shrimp

————— Liu He Ju 六合居 —————

The restaurant features Beijing Roast Duck and delicacies from different parts of China.

- Tel: (86) 10-51980888
- Location: NO. 52 Yuanda Lu, Haidian District
- Specialty: roast duck

————— Quanjude Roast Duck 全聚德烤鸭 —————

The most renowned roast duck restaurant in China.

- Tel: (86) 10-65112418
- Location: No. 32 Qianmen Xijie, Chongwen District
- Specialty: roast duck

———— Pure Lotus Vegetarian Restaurant 净心莲素食餐厅 ————

A creative vegetarian restaurant run by monks.

- **Tel:** (86) 10-65923627
- **Location:** No. 10 Nongzhanguan Nanlu, Chaoyang District
- **Specialties:** vegetarian dishes, yoga salad

———— Green T. House 紫云轩 ————

The restaurant serves fusion cuisine, featuring creatively produced food.

- **Tel:** (86) 10-65528310/8311
- **Location:** No. 6 Gongti Xilu, Chaoyang District (close to the French Cultural Center)
- **Specialties:** greentea tofu, ice cream, roast catfish

———— Gou Bu Li 狗不理 ————

The most famous steamed stuffed bun (*baozi*) chain store in China.

- **Tel:** (86) 10-88892155
- **Location:** 5th floor of Golden Resource New Yansha Mall, No. 1 Yuanda Lu, Haidian District
- **Specialties:** various kinds of steamed stuffed buns

———— The Spaghetti House 意粉屋 ————

An Italian restaurant that provides nearly 100 kinds of food such as pizza, snacks, main courses and desserts.

- **Tel:** (86) 10-88875607
- **Address:** 1st floor of Golden Resource New Yansha Mall, No. 1 Yuanda Lu, Haidian District
- **Specialties:** braised pork chop with mushroom gravy, Italian Mozzarella Fritta, pan-fried salmon

———— Papa John's Pizza 棒约翰比萨 ————



As the world's third largest pizza company, it offers a simple but delightful dining experience.


- **Tel:** (86) 10-88875655
- **Address:** 1st floor of Golden Resource New Yansha Mall, No. 1 Yuanda Lu, Haidian District
- **Specialties:** Alfredo Deluxe, Big Catch, Island Spice

6. Tourist Attractions



For more information about tourism, or to register for the half-day tour, please contact the CYTS International Travel (p37) staff on the 1st floor of the Main Congress Building.



• Half-Day Tour Routes (on 26th August, Recommended)

Route 1	Tian'anmen Square & Forbidden City	
Time	Attractions	Gallery
13:30	Meet at the Shuttle Bus Area of East Campus BFSU	
14:00-14:10	Pass by the Tian'anmen Square : As the largest square in the world, the Tian'anmen Square is a place where all the national festival activities take place.	
14:30-16:30	Visit the Forbidden City : Located in the middle of Beijing, the Forbidden City was the imperial palace from the Ming Dynasty to the end of the Qing Dynasty. The complex exemplifies traditional Chinese palatial architecture. Declared a World Heritage Site in 1987, the Forbidden City now houses the Palace Museum, which boasts an extensive collection of artwork and artifacts.	
17:00-17:45	Return	

Route 2	National Museum	
Time	Attractions	Gallery
13:30	Meet at the Shuttle Bus Area of East Campus BFSU	
14:30-17:00	Visit the National Museum : The National Museum of China (NMC) is located on the east side of the Tian'anmen Square in Beijing. It was founded in February 2003 after a merger between the former National Museum of Chinese History and the National Museum of Chinese Revolution. NMC, an integrated national museum under the Ministry of Culture, focuses on both history and art and is dedicated to its collection, exhibitions, research, archaeology, public education, and cultural communication.	
17:00-17:45	Return	

INFORMATION FOR CULTURAL AILA

Route 3	Summer Palace	Gallery
Time	Attractions	
13:30	Meet at the Shuttle Bus Area of East Campus BFSU	
14:00-16:30	<p>Visit the Summer Palace:</p> <p>The Summer Palace is a favorite place for visitors to Beijing. Originally it was a retreat for emperors to escape the scorching summer heat in the city. It was included in the UNESCO World Heritage List in 1998, for its being “a masterpiece of Chinese landscape garden design” and “a harmonious ensemble of outstanding aesthetic value.” It is now a popular tourist destination and also serves as a recreational park.</p>	
16:40-17:00	Go boating on the lake	
17:00-17:45	Return	

Route 4	Hutong Culture Tour & Drum Tower	Gallery
Time	Attractions	
13:30	Meet at the Shuttle Bus Area of East Campus BFSU	
14:00-15:00	<p>Visit the Hutongs and the Hutong residents:</p> <p>Hutong is the Chinese name for ancient city alleys and narrow lanes originally built in the Yuan Dynasty. Dating back about one thousand years, these neighborhoods of narrow, twisting streets represent the “real life” of Beijing, where passageways connect to courtyards of traditional compact homes. Old-fashioned pedicab tours through the Hutongs are very popular. You can visit a traditional courtyard which is a typical residence of old Beijingers. You can learn making Chinese dumplings with hosts and hostesses.</p>	
15:30-16:45	Enjoy the drum show on the top of the Drum Tower	
17:00-17:45	Return	

CYTS INTERNATIONAL TRAVEL CO., LTD

China CYTS Tours Holding Co., Ltd. (CYTS),

founded in 1980 and listed at the Shanghai Stock Exchange on December 3, 1997 as the first one in travel service, is currently the top tour operator in China.

In addition to the Beijing head office, CYTS has over 60 chain stores and outlets all over China, as well as 3 branch offices in China's Hong Kong, Japan and North America.

CYTS is the authorized travel agency of the 16th World Congress of Applied Linguistics. For details of the Congress Tour, please visit the website

<http://www.chinatraveldepot.com/Website/AILA20110714/> , or read the following brief introduction:

Congress Tour:

Route 1	Tian'anmen Square & Forbidden City (Half-day tour)
Rate	RMB 102 per person (USD 16 per person)
Route 2	National Museum (Half-day tour)
Rate	RMB 40 per person (USD 6.5 per person)
Route 3	Summer Palace (Half-day tour)
Rate	RMB 77 per person (USD 12 per person)
Route 4	Hutong Culture Tour & Drum Tower (Half-day tour)
Rate	RMB 152 per person (USD 24 per person)

Pre & Post Congress Tour (Price does not include intercity flights in China):

Xi'an	3 Days Xi'an Highlights Tour
Starting Price	USD 315 per person (with twin shared room)
Guilin	4 Days Guilin and Yangshuo Essence Tour
Starting Price	USD 260 per person (with twin shared room)
Shanghai	3 Days Unique Shanghai Tour
Starting Price	USD 265 per person (with twin shared room)

Wish you a good stay in Beijing and in China!

For Tour Packages enquiry: tourpackages@ChinaTravelDepot.com
 Tel: +(86) 10 5815 8830 Toll free in USA & Canada: 1-888-598-2008
www.chinatraveldepot.com



• Sightseeing Attractions

———— Tian'anmen 天安门 ————

Overview: Widely known as a national symbol of China, the Tian'anmen Square was first built during the Ming Dynasty in 1420. Tian'anmen is often referred to as the front entrance to the Forbidden City. However, it is actually the entrance to the Imperial City, within which the Forbidden City was located. Tian'anmen is located to the north of the Tian'anmen Square, across the Chang'an Avenue.

- **Bus:** Take No. 1, 4, 5, 8, 10, 20, 22, 37, 52, or 728 to Tian'anmen Dong Station (天安门东站).
- **Subway:** Take Subway Line 1 to Tian'anmen Dong Station (天安门东站).

———— The Forbidden City 故宫 ————

Overview: The Forbidden City, so called because it was off-limits to most of the world for 500 years, is the best preserved cluster of ancient buildings in China. The old world of emperors and concubines, eunuchs and conspicuous wealth still hovers over the lush gardens, courtyards, pavilions and great halls of the palace.

- **Bus:** Take No. 101, 103, 109, 124, 685, 810, 814, or 846 to Gugong Station (故宫站).
- **Subway:** Take Subway Line 1 to Tian'anmen Station (天安门站).
- **Ticket:** Nov-Mar RMB 40; Apr-Oct RMB 60

———— National Museum of China 国家博物馆 ————

Overview: Located on the east side of the Tian'anmen Square, the National Museum of China covers an area of 200,000 square meters which is the largest among all museums in the world. With about one million pieces of collection, the museum is constituted by two basic exhibition areas, namely, "Ancient China" and "Road to Rejuvenation".

- **Bus:** Take No. 1, 2, 10, 20, 37, 52, 59, 82, 99, 120, 126, or 728 to Tian'anmen Dong Station (天安门东站).
- **Subway:** Take Subway Line 1 to Tian'anmen Dong Station (天安门东站).
- **Ticket:** Free

———— The Temple of Heaven 天坛 ————

Overview: The Temple of Heaven is a complex of Taoist buildings situated in the southeastern part of central Beijing. The complex was visited by emperors of the Ming and Qing dynasties for annual ceremonies of praying to Heaven for good harvest.

- **Bus:** Take No. 6, 25, 34, 36, 39, 41, 43, 60, 116, 610, 684, 687, 707, 723, 743, 958, or 957 to Tiantan Dongmen Station (天坛东门站); take No. 36, 53, 120, 122, 610, 525, 800, 803, or 958 to Tiantan Nanmen Station (天坛南门站); take No. 2, 7, 15, 69, 17, 20, 105, 504, 707, 729, or 826 to Tiantan Ximen Station (天坛西门站); take No. 6, 34, 35, 36, 110, 106, 687, 707, or 743 to Tiantan Beimen Station (天坛北门站).
- **Subway:** Take Subway Line 5 to Tiantan Dongmen Station (天坛东门站).
- **Ticket:** Entrance RMB 15; Through RMB 35
- **Audio guide:** RMB 40, deposit RMB 100, available at each gate

———— The Summer Palace 颐和园 ————

Overview: The Summer Palace is mainly dominated by the Longevity Hill (60 meters high) and the Kunming Lake. It covers an expanse of 2.9 square kilometers, three quarters of which is water. The central Kunming Lake covering 2.2 square kilometers was entirely man-made and the excavated soil was used to build the Longevity Hill. In the Summer Palace, one finds a variety of palaces, gardens, and other classical-style architectural structures.

- **Bus:** Take No. 374 to Yiheyuan Xinjian Gongmen Station (颐和园新建宫门站).
- **Taxi:** The Summer Palace is only 15 minutes' ride away from BFSU, about RMB 30.
- **Ticket:** Entrance RMB 30; Through RMB 60
- **Audio guide:** RMB 40

————— **Badaling Great Wall 八达岭长城** —————

Overview: This is the most visited section of the Great Wall in China, approximately 50 miles (80 km) northwest of urban Beijing. The portion of the wall was built during the Ming Dynasty (1368-1644), and was heavily restored in both the 1950s and the 1980s. Punctuated with watchtowers, the 6m-wide wall is clad in brick, typical of the stonework employed in the Ming Dynasty when people restored and expanded the fortification. The highest point of Badaling is Beibalou (北八楼), approximately 0.63 miles (1,015 m) above sea level.

- **Bus:** Take No. 919 to Badaling Station (八达岭站) (every 10 minutes, slow, RMB 7; fast, RMB 12).
- **Train (recommended):** Beijing North Railway Station, take Line S2 to Badaling Station (1st class, RMB 23; 2nd class, RMB 19).

————— **The Ming Tombs 明十三陵** —————

Overview: The Ming Tombs are located in Changping District, about 50 kilometers (31 miles) to the northwest of Beijing. This imperial cemetery covers an area of 40 square kilometers with 13 Ming emperors, 23 empresses, many imperial concubines, princes and princesses buried there. These tombs are the best-preserved of all Chinese imperial tombs.

- **Bus:** Take No. 919 (every 10 minutes, slow, RMB 7; fast, RMB 12) to Badaling Station.
- **Ticket:** Apr-Oct RMB 45; Nov-Mar RMB 35

————— **National Stadium 国家体育场** —————

(Bird's Nest 鸟巢)

Overview: Located in the Olympic Green, the stadium has a floor space of 258,000 square meters. The design, which originated from the study of Chinese ceramics, implemented steel beams in order to hide supports for the retractable roof, thus giving the stadium the appearance of a "Bird's nest".

- **Bus:** Take No. 386, 407, 611, 656, 658, 660, 689, 740, 753, 939, 944 or 983 to Beichenqiao Xi Station (北辰桥西站).
- **Subway:** Take Subway Line 8 to Olympic Sports Center Station (奥体中心站).
- **Ticket:** RMB 50

————— **National Aquatics Center 国家游泳中心** —————

(Water Cube 水立方)

Overview: Located in the Beijing Olympic Park, Water Cube is one of the Beijing Olympic Games' best-known buildings. During the Games, Water Cube hosted the swimming, diving and synchronized swimming events, in which 42 gold medals were awarded. As the largest membrane structure construction in the world, now it also serves as a multi-functional international center providing various recreational activities.

- **Bus:** Take No. 386, 407, 611, 656, 658, 660, 689, 740, 753, 939, 944 or 983 to Beichenqiao Xi Station (北辰桥西站).
- **Subway:** Take Subway Line 8 to Olympic Sports Center Station.
- **Ticket for visiting:** RMB 30 (09:00-21:00)
- **Ticket for swimming:** RMB 50 (13:00-21:00 weekdays/09:00-21:00 weekends)
- **Ticket for waterpark:** RMB 200 (09:00-20:30)

• Cultural Attractions

————— Wudaokou 五道口 —————

Overview: Wudaokou is a neighborhood in the Haidian District of Northwest Beijing. Along with the Xueyuan Lu area, it is home to the vast majority of Beijing's student population. Its popularity as an international student area is reflected in its large number of bars and nightclubs (including Bar Loco, Pyro, Lush and Propaganda), which generally offer drinks at cheaper prices than many other similar clubs in more central areas, such as Sanlitun. Two of China's top universities, Peking University and Tsinghua University, are located around here, so is Beijing Language and Culture University, which has many overseas students. These students have brought into the area an international flavor. It naturally attracts young people with its academic style, and upper-class workers have fallen in love with its cafés, restaurants, bookstores and neon lights.

Location: Haidian District

Distance from BFSU≈9 km

Taxi: about RMB 25

Subway: Take Subway Line 13 to Wudaokou Station (五道口站)

————— Shichahai Bar Street 什刹海酒吧街 —————

Overview: Shichahai Bar Street is the most charming area of Beijing. The bar street is surrounded by flowing waters with boats floating on and bridges across. You will be attracted by both the bar street itself and the surroundings. It is located at the center of Beijing. Not far from here is the famous Luogu Xiang (锣鼓巷), and courtyards, the symbol of traditional Beijing, are easily found here. As Shichahai is close to the Drum Tower (鼓楼) and the Bell Tower (钟楼), as well as the north gate of Beihai Park (北海公园), visitors can also visit these tourist attractions.

Location: Xicheng District (North Gate of Beihai Park)

Distance from BFSU≈12.9 km

Taxi: about RMB 35

————— Maliandao Tea Street 马连道茶叶街 —————

Overview: Maliandao Tea Street, also known as "NO. 1 tea street in Beijing", is conveniently located near the Beijing West Railway Station in Xicheng District. Before 1996 it was a back street ignored by most Beijingers, but now the 1,500m-long strip has become the biggest tea market in Beijing and the largest tea distribution center in northern China. There are almost one thousand tea stores offering leaves from most tea-producing areas of China. All kinds of tea can be found there. It is popular with both Beijingers and visitors. Maliandao can be daunting for first-timers, with its boisterous tea shops selling thousands of different teas. It makes for a perfect day trip for those looking for cultural and adventurous experience.

Location: Xicheng District

Distance from BFSU≈14.5 km

Taxi: about RMB 35

————— Nanluogu Xiang 南锣鼓巷 —————

Overview: Nanluogu Xiang is an ancient alleyway (Hutong) in downtown Beijing and very close to Lake Houhai (后海), Yandai Xiejie (烟袋斜街), and the Drum Tower and the Bell Tower. It is a splendid north-south running alley in a constant state of renovation and replete with wi-fi bars, cafés and trinket shops. It also offers visitors a glimpse into *siheyuan*. This was one of the best preserved old Hutong areas in downtown Beijing with the typical Hutong layout of the Yuan Dynasty. For people who want to taste the feeling of being a citizen of a city both modern and historical, Nanluogu Xiang is the best choice. In recent years, not only Chinese, but also more and more foreigners

begin to own their business here. You can find the restaurant Guoke (过客), famous snack Wenyu cheese (文字奶酪), and creative T-shirts shop Chuang Ke Tie (创可贴).

Location: Dongcheng District

Distance from BFSU≈14.6 km

Taxi: about RMB 35

Subway: Take Subway Line 2 to Andingmen Station (安定门站) or Line 5 to Zhangzizhonglu Station (张自忠路站)

Liulichang Antique Market 琉璃厂古文化街

Overview: This 750-meter long strip south of Hepingmen in Xicheng District was once known as a Ming-dynasty gathering point for poets, scholars and literati. Today, the strip still resembles a traditional Chinese market street and offers curios, scroll paintings, calligraphy, old books, figurines and memorabilia to a roving crowd of tourists and culture buffs alike. Prices vary and bargaining is essential.

Location: Xicheng District

Distance from BFSU≈17.2 km

Taxi: about RMB 40

Subway: Take Subway Line 2 to Hepingmen Station (和平门站)

Qianmen Dajie 前门大街

Overview: Lying on Beijing's historical central axis just south of the Tian'anmen Square and the Forbidden City, the newly renovated Qianmen Dajie is a bustling pedestrian street of historic Qing-dynasty shops. Dozens of old buildings were rebuilt or renovated, along with many old namebrand shops of cultural and historic significance. First to catch the visitor's eye is the Dabei Photo Studio (大北照相馆) on the left, then comes Yuesheng Zhai (月胜斋), a Muslim food store on the right. Further south visitors can see Quanjude (全聚德), the roast duck restaurant serving the famous Peking Duck, a must for any tourist.

Location: Xicheng District

Distance from BFSU≈17.5 km

Taxi: about RMB 40

Subway: Take Subway Line 2 to Qianmen Station (前门站)

Wangfujing Dajie (Pedestrian Street) 王府井步行街

Overview: Wangfujing Dajie, Beijing's famous shopping street, can be found in Dongcheng District, east of the Forbidden City. It is one of Beijing's oldest and most famous shopping areas. The 810-meter-long pedestrian street is home to more than 1,000 famous brands, including numerous traditional Chinese brands as well as international ones such as Hermes, Gucci, Cartier and Armani. Shoppers may purchase at local brand stores such as Shengxifu (盛锡福) and Ruifuxiang (瑞蚨祥), and eat at famous restaurants such as Donglaishun (东来顺) and Quanjude (全聚德). The street receives more than 200,000 visitors a day on average, a figure that can easily rise to 500,000 during holidays.

Location: Dongcheng District

Distance from BFSU≈18.6 km

Taxi: about RMB 45

Subway: Take Subway Line 1 to Wangfujing Station (王府井站)

Xiushui Jie (Silk Market) 秀水街

Overview: Xiushui Jie is one of the most popular destinations for overseas tourists. It is very close to Central Business District (Chaoyang District), adjacent to hundreds of embassies and consulates, hundreds of hotels and office buildings. Commodities mainly sold in Xiushui Jie are shoes, bags and cases, casual wear, fashion clothing, cowboy series, sports leisure attire, kid's clothing, ties, silk handkerchiefs, silk wax printing, craft table cloth,

INFORMATION FOR CULTURAL AILA

handicraft, jewelry, antiques, calligraphy and paintings, as well as Beijing roast duck and characteristic snacks. Be prepared for loud and pushy sellers who are accustomed to dealing with tourists.

Location: Chaoyang District

Distance from BFSU≈20.9 km

Taxi: about RMB 55

Subway: Take Subway Line 2 to Jianguomen Station (建国门站)

———— Sanlitun Bar Street 三里屯酒吧街 ————

Overview: Sanlitun in Chaoyang District is the hub of Beijing's bar scene, where you'll find many of the most popular bars. It is part of the larger Gongti nightlife area, and bars here have different styles ranging from European to Asian, modern to nostalgic, tranquil to noisy. Every bar has its own style and unique taste. The Yaxiu Clothing Market (雅秀服装市场), a popular shopping destination for locals and foreigners alike, is situated alongside this street.

Location: Chaoyang District

Distance from BFSU≈22.1 km

Taxi: about RMB 45

Subway: Take Subway Line 10 to Tuanjiehu Station (团结湖站)

7. Shopping

The following are some of the famous shopping areas in Beijing that you may be interested in.

Golden Resource New Yansha Mall 金源新燕莎

Overview: Golden Resource New Yansha Mall is an integration of multiple businesses, covering entertainment, catering and shopping. It is a super business carrier. The Mall includes stores like Capital City Top-Grade Department Store, Yansha Main Store, Popular Fashion Department Store and Guiyou Main Store as well as about five hundred brand exclusive-sale stores, among which about one hundred are flagship stores of those brands. Meanwhile, more than a hundred restaurants are distributed in an organized manner all over the building. Customers may also come to enjoy singing, dancing, fitting, movies and video games etc.

Opening Hours: Monday-Thursday 10:00-21:00; Friday-Sunday 10:00-22:00

Location: No. 1 Yuanda Lu, Haidian District; distance from BFSU≈4km

Wangfujing Dajie 王府井大街

Overview: For seven centuries a large commercial thoroughfare which never ceases to modernize itself and adapt to the times. Large malls, huge hoardings of international brands... Some shops are not to be missed: Shengxifu Hat Shop, at No. 196, where you can find a real Mao cap; Tongshenghe, at No. 225, where you can buy traditional Chinese shoes; and Ruifuxiang, at No. 190, where you can find a wide choice of silk.

Location: Wangfujing Dajie, Dongcheng District

Liulichang Antique Market 琉璃厂古文化街

Overview: It is the chance for a picturesque stroll. You will find here above all prints, pretty rice papers and everything to do with calligraphy.

Opening Hours: 09:00-17:00

Location: Liulichang, Hepingmen Wai, Xicheng District

Xiushui Jie (Silk Market) 秀水街

Overview: Market-style shopping mall for tourists selling all kinds of clothing, bags, shoes etc. All prices are negotiable so bargaining skills are essential.

Opening Hours: 09:00-19:00

Location: Xiushui Jie, Jianguomenwai Dajie, Chaoyang District

Panjiayuan Antique Market 潘家园旧货市场

Overview: Not to be missed! Everything is here under the huge, extremely lively roofs at this flea market: crafts, ethnic clothes and jewellery, antiques, china, Chinese furniture, sculpture, Tintin books in Chinese...

Opening Hours: Monday-Friday 08:30-18:00; Weekend 04:30-18:00

Location: Panjiayuan Qiao, Dongsanhuan Nanlu, Chaoyang District



8. Chinese Pinyin and Useful Expressions

There are altogether 21 initials in Chinese pinyin:

- b: like “b” in “bed” (unaspirated, voiceless)
- p: like “p” in “peach” (aspirated, voiceless)
- m: like “m” in “meat”
- f: like “f” in “foot”
- d: like “d” in “day” (unaspirated)
- t: like “t” in “tea” (aspirated)
- n: like “n” in “need”
- l: like “l” in “leaf”
- g: like “g” in “get” (unaspirated)
- k: like “k” in “kill” (aspirated)
- h: like “h” in “hen”
- j: close to “j” in “jeep” (without protruding the lips)
(unaspirated, voiceless)
- q: close to “ch” in “cheap” (without protruding the lips)
(unaspirated, voiceless)
- x: close to “sh” in “shirt” (voiceless)
- zh: like “dr” in “drink” (unaspirated)
- ch: like “ch” in “match” (aspirated)
- sh: close to “sh” in “shy”
- r: close to “r” in “roll”
- z: like “ds” in “words” (unaspirated)
- c: like “ts” in “cats” (aspirated)
- s: like “s” in “sunday”

English	Pinyin	Chinese
Transportation		
Taxi	chūzūchē	出租车
Bus	gōnggòng qìchē	公共汽车
Subway	dìtiě	地铁
Bicycle	zìxíngchē	自行车
Rickshaw	huánghuāchē	黄包车
Train	huǒchē	火车
Plane	fēijī	飞机
Ticket	piào	票
Baggage	xíngli	行李
Right	yòubiān	右边
Left	zuǒbian	左边
Behind	hòumian	后面
In front	qiánmian	前面
Go straight on.	Yízhí zǒu.	一直走。
Make a U-turn.	Diàotóu wǎng huí zǒu.	掉头往回走。
We've arrived!	Dào le!	到了!
I would like to buy a ticket for...	Wǒ yào mǎi yízhāng qiān de piào.	我要买一张去……的票。

English	Pinyin	Chinese
Numbers		
0	líng	零
1	yī	一
2	èr	二
3	sān	三
4	sì	四
5	wǔ	五
6	liù	六
7	qī	七
8	bā	八
9	jiǔ	九
10	shí	十
11	shíyī	十一
19	shíjiǔ	十九
20	èrshí	二十
100	yībǎi	一百
208	liǎngbǎi língbā	两百零八
500	wǔbǎi	五百
562	wǔbǎi liùshíèr	五百六十二
1000	yìqiān	一千
2000	liǎngqiān	两千
10000	yíwàn	一万
100000	shíwàn	十万
1000000	yìbǎiwàn	一百万

English	Pinyin	Chinese
Colors		
White	bái	白
Black	hēi	黑
Red	hóng	红
Yellow	huáng	黄
Blue	lán	蓝
Green	lǜ	绿
Brown	zōng	棕
Purple	zǐ	紫
Dark green	shēnlǜ	深绿
Light green	qiǎnlǜ	浅绿



English	Pinyin	Chinese	English	Pinyin	Chinese
Time			At the market		
Morning	shàngwǔ	上午	Market	shìchǎng	市场
Noon	zhōngwǔ	中午	I'd like to buy...	Wǒ xiǎng mǎi...	我想买……
Afternoon	xiàwǔ	下午	How much does it cost?	Duōshǎo qián?	多少钱?
Evening	wǎnshang	晚上	It's too expensive.	Tài guì le.	太贵了。
Yesterday	zuótiān	昨天	Cheaper please.	Piányi yìdiǎn.	便宜一点。
Today	jīntiān	今天			
Tomorrow	míngtiān	明天			
Now	xiànzài	现在			
Hour	xiǎoshí	小时			
Minute	fēnzhōng	分钟			
Quarter	kè	刻			
Monday	xīngqīyī	星期一			
Tuesday	xīngqīèr	星期二			
Sunday	xīngqītiān	星期天			
Weekend	zhōumò	周末			
What time is it now?	Xiànzài jǐdiǎn?	现在几点?			
What day is today?	Jīntiān xīngqī jǐ?	今天星期几?			
What is the date today?	Jīntiān jǐyuè jǐhào?	今天几月几号?			
It is August 8th.	Bāyuè bāhào.	八月八号。			
At the bank			At the restaurant		
Bank	yínháng	银行	Restaurant	fànguǎn	饭馆
Exchange money	huànqián	换钱	Menu	càidān	菜单
Chinese money	rénmínbì	人民币	Chopsticks	kuàizi	筷子
Euro	ōuyuán	欧元	Fork	chāzi	叉子
Swiss Franc	ruìshìfǎláng	瑞士法郎	Knife	dāozi	刀子
US Dollar	měiyuán	美元	Spoon	sháozi	勺子
Passport	hùzhào	护照	Glass/cup	bēizi	杯子
			Bottle	píngzi	瓶子
			What are your specialties?	Zhèlì yǒu shénme tèsecài?	这里有什么特色菜?
			To order.	Diǎncài.	点菜。
			It's delicious.	Hàochī jí le.	好吃极了。
			The bill.	Mǎidān.	买单。



English	Pinyin	Chinese	English	Pinyin	Chinese
Holding a conversation			Holding a conversation		
Good morning.	Nǐhǎo.	你好。	I would like...	Wǒ yào...	我要……
Goodbye.	Zàijiàn.	再见。	I don't want it!	Wǒ bú yào!	我不要!
Please.	Qǐng.	请。	Please give me a...	Qǐng gěi wǒ...	请给我……
Thank You.	Xièxie.	谢谢。	I want to go to...	Wǒ yào qù...	我要去……
You're welcome.	Búyòng xiè.	不用谢。	I want to buy...	Wǒ xiǎng mǎi...	我想买……
Excuse me.	Duìbuqǐ.	对不起。	I don't understand.	Wǒ tīng bu dǒng.	我听不懂。
Cheers!	Gānbēi!	干杯!	How do you say this in Chinese?	Hànyǔ zěnmē shuō?	汉语怎么说?
Is that okay?	Hǎo ma?	好吗?	What does this mean?	Zhè shì shénme yìsi?	这是什么 意思?
Alright (OK)!	Hǎo de!	好的!	Speak more slowly please.	Qǐng shuō màn yì diǎner.	请说慢 一点儿。
Very good.	Hěn hǎo.	很好。	Can you write it down for me?	Nǐ kěyǐ xiě yí xià ma?	你可以写一 下吗?
Is there a...?	Yǒu... má?	有……吗?	What is your nationality?	Nǐ shì nǎguó rén?	你是哪国人?
There is...	Yǒu...	有……	I am English.	Wǒ shì yīngguó rén.	我是英国人。
There isn't...	Méi yǒu...	没有……			
Where is...?	... zài nǎlǐ?	……在哪里?			
I don't know.	Wǒ bù zhīdào.	我不知道。			
Is it possible to...?	Kěyǐ... ma?	可以……吗?			
It's possible.	Kěyǐ.	可以。			
It's not possible.	Bù kěyǐ.	不可以。			
Holding a conversation					
I am French.	Wǒ shì fǎguó rén.	我是法国人。			
I am American.	Wǒ shì měiguó rén.	我是美国人。			
I am Australian.	Wǒ shì àodàlìyà rén.	我是澳大 利亚人。			
What's your name?	Nǐ jiào shénme míngzi?	你叫什么 名字?			
My name is...	Wǒ jiào...	我叫……			
When?	Shénme shíhou?	什么时候?			
What?	Shénme?	什么?			
Who?	Shéi?	谁?			
What time is it?	Jǐdiǎn zhōng le?	几点钟了?			



